

APPENDIX III: WELL LOGS

During Leg 6 Sites 53.0 in the Philippine Sea and Site 57.0 in the Caroline Ridge Area were logged. At Site 53.0, the following types of logs were taken: spontaneous potential, electrical resistivity, gamma ray, neutron,

velocity, and hole calipers. At Site 57.0, the following well logs have been run: spontaneous potential, resistivity, gamma ray, neutron, qualitative gamma-gamma-density, sound velocity, and caliper logs.

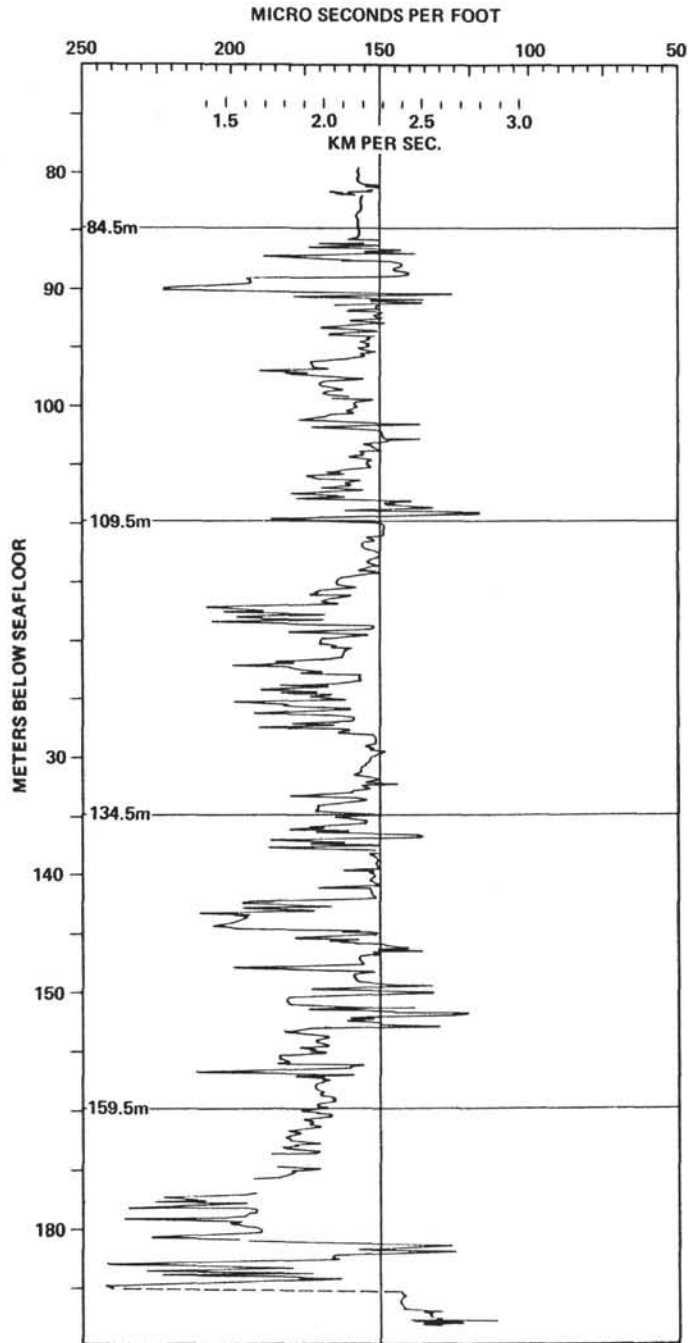


Figure 1. *Velocity Log for Hole 53.0.*