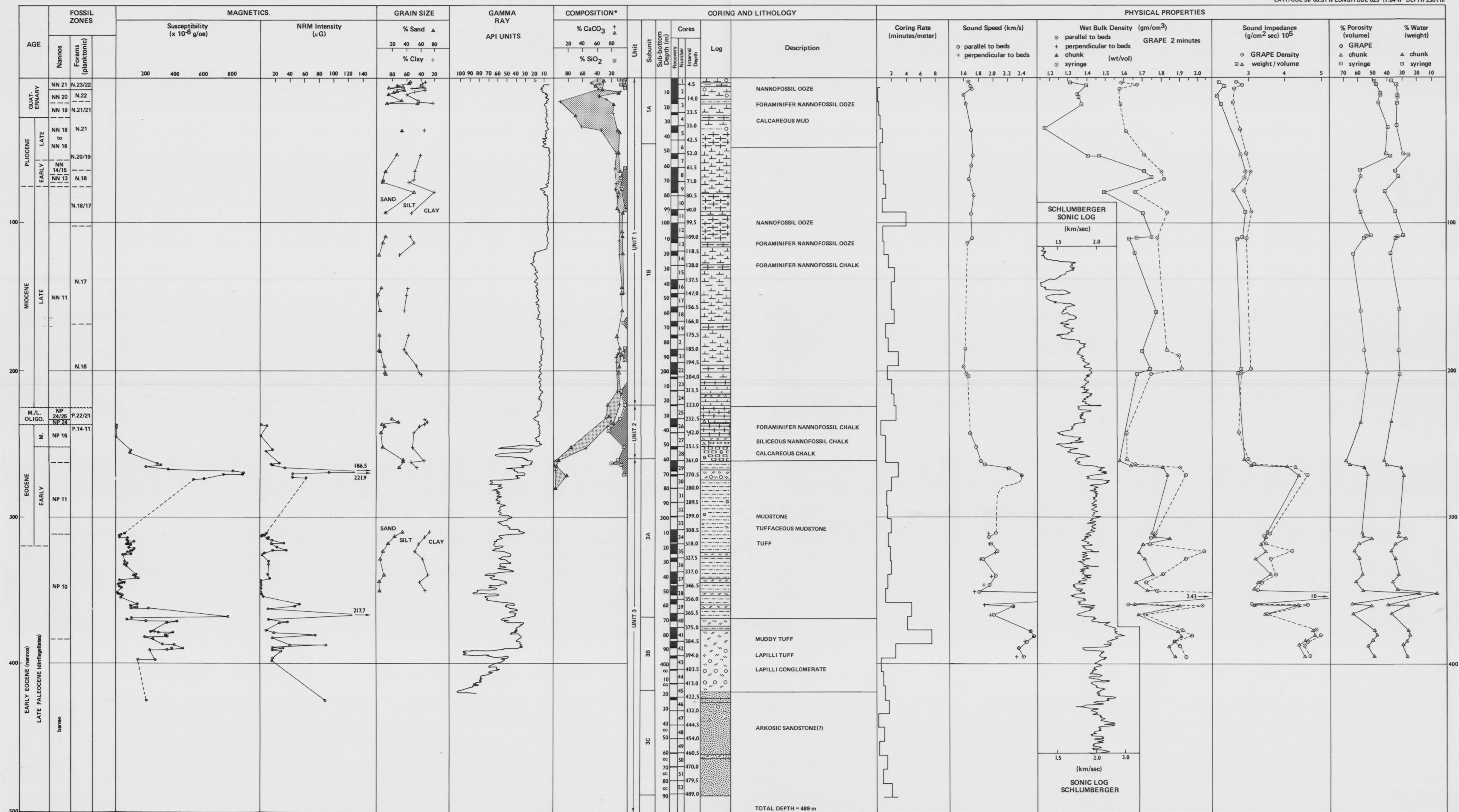


SUPERLOG FOR SITE 403

LEG 48 SITE 403
LATITUDE 56° 08.31'N LONGITUDE 023° 17.64'W DEPTH 2301 m



+ Carbonate bomb analysis, lithology sample
 ○ Carbonate bomb analysis, water content sample
 ▲ Carbon carbonate analysis, LECO
 □ Biogenous Si estimates from smear slides

TOTAL DEPTH = 489 m