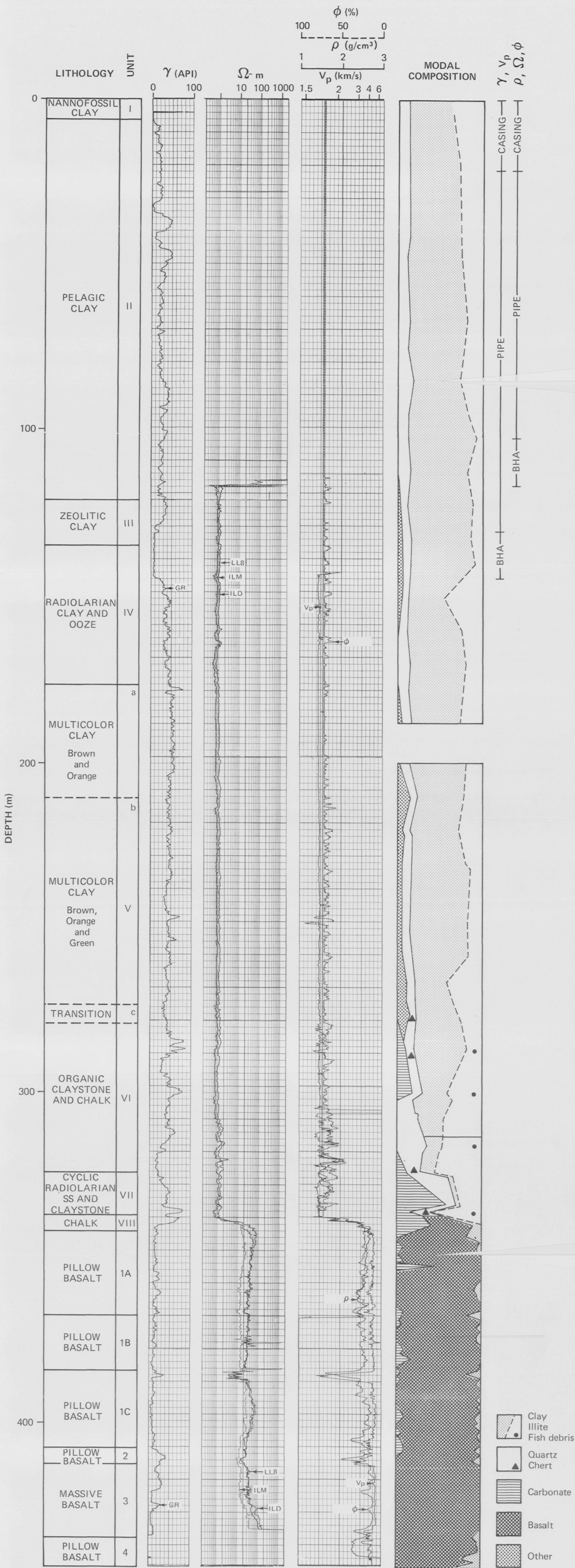


417D LOGGING



Volume 51-53: Part I: Chapter 7:

Figure 4. Lithology, logging data, and modal composition as a function of depth in Hole 417D. Logging data corrected for borehole conditions (see text); natural gamma activity,  $\gamma$ , in API units; resistivity in ohm-meters; porosity,  $\phi$ , in volume %; wet bulk density,  $\rho$ , in g/cm<sup>3</sup>; compressional wave velocity,  $V_p$ , in km/s. Modal analyses obtained by XRD in the sediments (Muller and Mann, this volume) and by visual inspection in the basalts (Site 417 Report, this volume); top of section represented by data from Hole 417A; horizontal dotted line at 315 meters marks upper limit of mixed-layer clays.