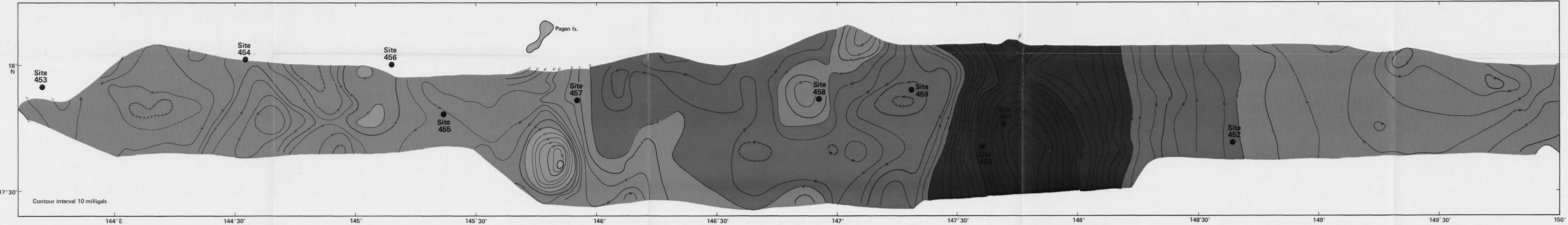
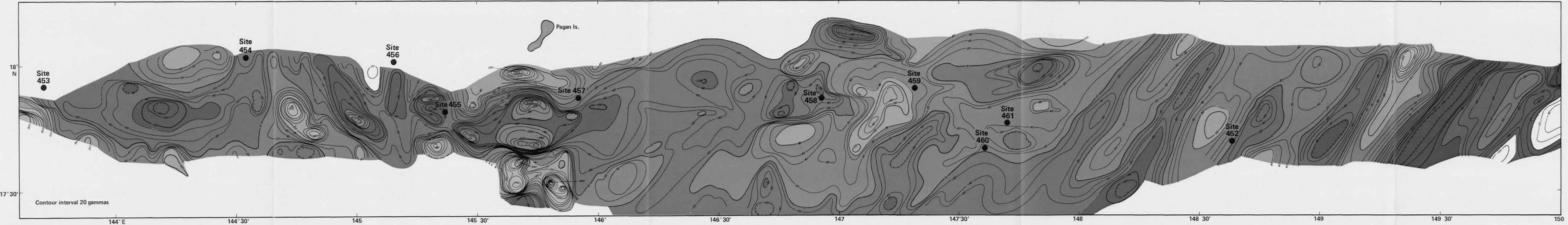


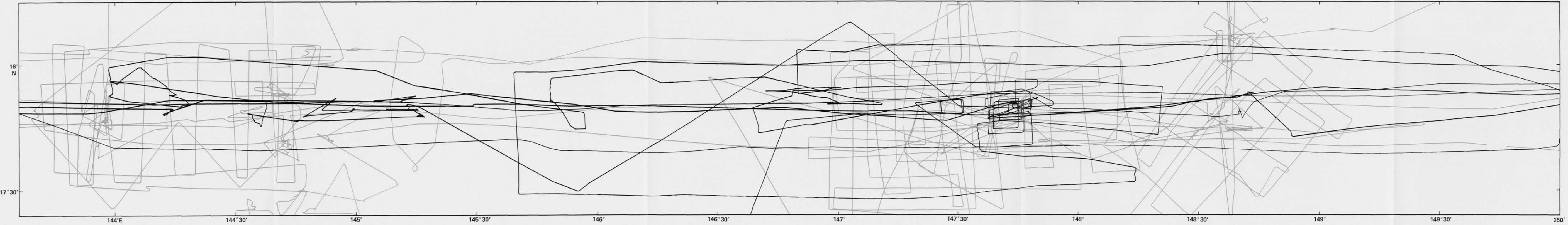
Bathymetry: depth in meters corrected using Matthew's Tables data from all tracks.



Gravity: milligals, free-air anomaly data from black tracks only.



Magnetics: gammas, total residual field data from black tracks only.



Ship tracks — Black: KK760103 and Blue: KK770317, Legs 3 and 4, TSDY08WT, C2006.

Ship tracks: Black: KK760103  
Blue: KK770317, Legs 3 and 4  
TSDY08WT  
C2006

