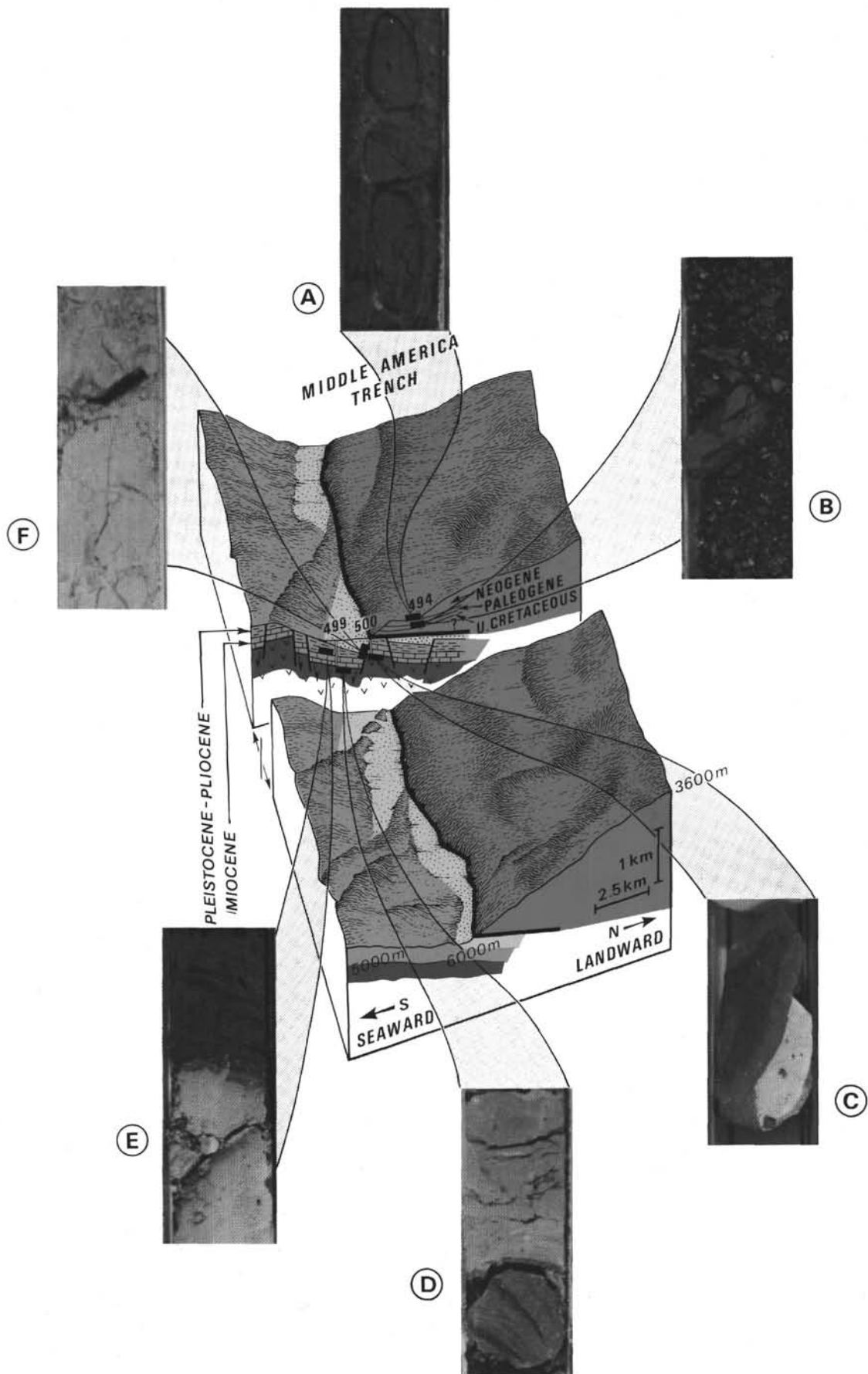


HIGHLIGHTS OF THE DSDP LEG 67 SAMPLES
DRILLED FROM THE GUATEMALAN ACTIVE MARGIN

- A. Section 498A-15-2. Lower slope; clathrates in the lower middle Miocene.
- B. Section 494A-27-3. Lower slope; microfracturing in the middle Eocene.
- C. Section 500-19-1. Trench floor; basement basalt and baked chalk.
- D. Section 499B-9,CC. Trench floor; contact between lower Miocene chalk and basement basalt.
- E. Section 499-23-1. Trench; contact between middle Miocene siliceous mud and middle lower miocene chalk.
- F. Section 500-14-1. Trench; normal fault in the middle lower Miocene chalk.



Initial Reports of the Deep Sea Drilling Project

A Project Planned by and Carried Out With the Advice of the
JOINT OCEANOGRAPHIC INSTITUTIONS FOR DEEP EARTH SAMPLING (JOIDES)

VOLUME LXVII

covering Leg 67 of the cruises of the Drilling Vessel *Glomar Challenger*
Manzanillo, Mexico, to Puntarenas, Costa Rica
May-June 1979

PARTICIPATING SCIENTISTS

Jean Aubouin, Roland von Huene,
Jacques Azéma, William T. Coulbourn, Darrel S. Cowan,
Joseph A. Curiale, Carlos A. Dengo, Richard W. Faas, William Harrison,
Reinhard Hesse, John W. Ladd, Nikita Muzylöv,
Tsunemasa Shiki, Peter R. Thompson,
and M. Jean Westberg

SHIPBOARD SCIENCE REPRESENTATIVE

William T. Coulbourn

EDITOR

Susan Orlofsky

Prepared for the
NATIONAL SCIENCE FOUNDATION
National Ocean Sediment Coring Program
Under Contract C-482

By the
UNIVERSITY OF CALIFORNIA
Scripps Institution of Oceanography
Prime Contractor for the Project

This material is based upon research supported by the National Science Foundation under Contract No. C-482.

Any opinions, findings, and conclusions or recommendations expressed in this publication are those of the author(s) and do not necessarily reflect the views of the National Science Foundation.

It is recommended that reference to the whole or to part of this volume be made in one of the following forms, as appropriate:

Aubouin, J., von Huene, R., et al., 19 . *Init. Repts. DSDP*, 67: Washington (U.S. Govt. Printing Office).

Thompson, P. R., 19 . Foraminifers of the Middle America Trench. In Aubouin, J., von Huene, R., et al., *Init. Repts. DSDP*, 67: Washington (U.S. Govt. Printing Office), 351-382.

Effective Publication Dates of DSDP *Initial Reports*

According to the International Code of Zoological Nomenclature, the date of publication of a work and of a contained name or statement affecting nomenclature is the date on which the publication was mailed to subscribers, placed on sale, or when the whole edition is distributed free of charge, mailed to institutions and individuals to whom free copies are distributed. The mailing date, *not the printed date*, is the correct one.

Mailing dates of the more recent *Initial Reports of the Deep Sea Drilling Project* are as follows:

Volume 59—January, 1981
Volume 60—February, 1982
Volume 61—August, 1981
Volume 62—December, 1981
Volume 63—September, 1981
Volume 66—March, 1982

Printed November 1982

Library of Congress Catalog Card Number 74—603338

For sale by the Superintendent of Documents, U.S. Government Printing Office
Washington, D.C. 20402
Stock Number 038-000-00511-1

Foreword

Between 1872 and 1876, the H.M.S. CHALLENGER undertook the world's first major oceanographic expedition. That expedition greatly expanded man's knowledge of the world's oceans and revolutionized his ideas about this planet earth. A century later, over the course of the past decade, another vessel, also named CHALLENGER, has continued to expand man's knowledge of the world ocean, and has revolutionized his concepts of how the seafloor and continents were formed and continue to change. The D/V GLOMAR CHALLENGER is plying the same waters as its historic counterpart, seeking answers to new questions concerning the history of our planet and the life it supports. The continued advancement of knowledge about the fundamental processes and dynamics of the earth will lead to a greater understanding of our planet and more intelligent use of its resources.

Since 1968, the Deep Sea Drilling Project has been supported by the National Science Foundation, primarily through a contract with the University of California which, in turn, subcontracts to Global Marine Incorporated for the services of the drillship D/V GLOMAR CHALLENGER. Scripps Institution of Oceanography is responsible for management of the University contract.

Through contracts with Joint Oceanographic Institutions, Inc. (JOI, Inc.), the National Science Foundation supports the scientific advisory structure for the project and funds some pre-drilling site surveys. Scientific planning is conducted under the auspices of the Joint Oceanographic Institutions for Deep Earth Sampling (JOIDES). The JOIDES advisory group consists of over 250 members who make up 24 committees, panels or working groups. The members are distinguished scientists from academic institutions, government agencies and private industry in many countries.

In 1975, the International Phase of Ocean Drilling (IPOD) began. IPOD member nations, USSR, Federal Republic of Germany, Japan, United Kingdom and France, provide partial support of the project. Each member nation takes an active role in the scientific planning of the project through organization membership in JOIDES. Scientists from these countries also participate in the field work aboard the D/V

GLOMAR CHALLENGER and post-cruise scientific studies.

The first ocean coring operations for the Deep Sea Drilling Project began on August 11, 1968. During the ensuing years of drilling operations in the Atlantic, Pacific and Indian Oceans, the Gulf of Mexico, Caribbean Sea, Mediterranean Sea, and Antarctic waters, the scientific objectives that had been proposed were successfully accomplished. Primarily, the age of the ocean basins and their processes of development were determined. The validity of the hypothesis of sea floor spreading was firmly demonstrated and its dynamics studied. Emphasis was placed on broad reconnaissance and testing the involvement of mid-oceanic ridge systems in the development of the ocean basin. Later legs of the CHALLENGER's voyages concentrated on the nature of the oceanic crust, the sedimentary history of the passive ocean margins, sediment dynamics along active ocean margins and other areas of interest. The accumulated results of this project have led to major new interpretations of the pattern of sedimentation and the physical and chemical characteristics of the ancient oceans.

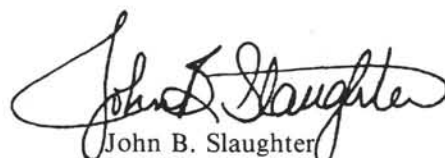
As a result of the continued success of the Deep Sea Drilling Project, the National Science Foundation has presently extended the project through fiscal year 1982. The latest contract extends the period of exploration of the deep ocean floors of the world by GLOMAR CHALLENGER to a total of over 14 years.

A new dimension of scientific discovery has been added to the project, the detailed study of paleoenvironment. With the introduction of the

hydraulic piston corer in 1979, virtually undisturbed cores of the soft sediment layers can now be obtained. This technological advance, together with the new pressure core barrel, has greatly enhanced the ability of the project to study ancient ocean climates as recorded by the micro flora and fauna preserved in the sedimentary layers.

These reports contain the results of initial studies of the recovered core material and the associated geophysical information. The contribution to knowledge has been exceedingly large. Future studies of the core material over many years will contribute much more.

People of our planet, in their daily living and work activities will benefit directly and/or indirectly from this research. Benefits are derived from the technological advances in drilling, coring, position-keeping and other areas as well as through the information being obtained about natural resources and their origins. As with the original H.M.S. CHALLENGER oceanographic expedition, this second CHALLENGER expedition will have profound effects on scientific understanding for many years to come.



John B. Slaughter
Director

Washington, D.C.
June 1981

Preface

Recognizing the need in the oceanographic community for scientific planning of a program to obtain deep sedimentary cores from the ocean bottoms, four of the major oceanographic institutions that had strong interests and programs in the fields of marine geology and geophysics formed, in May 1964, the Joint Oceanographic Institutions for Deep Earth Sampling (JOIDES). This group, Lamont-Doherty Geological Observatory; Rosenstiel School of Marine and Atmospheric Science, University of Miami; the Scripps Institution of Oceanography, University of California at San Diego; and the Woods Hole Oceanographic Institution, expressed an interest in undertaking scientific planning and guidance of the sedimentary drilling program. It was the purpose of this group to foster programs to investigate the sediments and rocks beneath the deep oceans by drilling and coring. The membership of this original group was later enlarged in 1968 when the University of Washington became a member, and again in 1975 when University of Hawaii Institute of Geophysics, the Oregon State University School of Oceanography, the University of Rhode Island Graduate School of Oceanography, and Texas A&M University Department of Oceanography became members. In accordance with international agreements, institutions of participating nations became members of JOIDES. Thus, during 1974 to 1976, the Bundesanstalt für Geowissenschaften und Rohstoffe of the Federal Republic of Germany, the Centre National pour l'Exploitation des Océans of France, the National Environmental Research Council of the United Kingdom, the University of Tokyo of Japan, and Academy of Sciences of the USSR became JOIDES members.

Through discussions sponsored by the JOIDES organization, with support from the National Science Foundation, Columbia University's Lamont-Doherty Geological Observatory operated a drilling program in the summer of 1965, on the Blake Plateau region off Jacksonville, Florida.

With this success in hand, planning began for a more extensive deep sea effort. This resulted in the award of a contract by the National Science Foundation to the Scripps Institution of Oceanography, University of California at San Diego for an eighteen-month drilling program in the Atlantic and Pacific oceans, termed the Deep Sea Drilling Project (DSDP). Operations at sea began in August 1968, using the now-famous drilling vessel, the *Glomar Challenger*.

The goal of the Deep Sea Drilling Project is to gather scientific information that will help determine the age and processes of development of the ocean basins. The primary strategy is to drill deep holes into the ocean floor, relying largely on technology developed by the petroleum industry.

Through the efforts of the principal organizations and of the panel members, who were drawn from a large cross section of leading earth scientists and associates, a scientific program was developed.

Cores recovered from deep beneath the ocean floor provide reference material for a multitude of studies in fields such as biostratigraphy, physical stratigraphy, and paleomagnetism that afford a new scope for investigating the physical and chemical aspects of sediment provenance, transportation, deposition, and diagenesis. In-hole measurements, as feasible, provide petrophysical data to permit inference of lithology of intervals from which no cores were recovered.

A report, describing the core materials and information obtained both at sea and in laboratories onshore, is published after the completion of each cruise. These reports are a cooperative effort of shipboard and shore-based scientists and are intended primarily to be a compilation of results which, it is hoped, will be the starting point for many future new and exciting research programs. Preliminary interpretations of the data and observations taken at sea are also included.

Core materials and data collected on each cruise will be made available to qualified scientists through the Curator of the Deep Sea Drill-

ing Project, following a Sample Distribution Policy (p.xvii) approved by the National Science Foundation.

The advent of *Glomar Challenger*, with its deep-water drilling capability, is exceedingly timely. It has come when geophysical investigation of the oceans has matured through 20 to 30 years of vigorous growth to the point where we have some knowledge about much of the formerly unknown oceanic areas of our planet. About one million miles of traverses have been made which tell us much about the global pattern of gravity, magnetic and thermal anomalies, and about the composition, thickness, and stratigraphy of the sedimentary cover of the deep sea and continental margin. The coverage with such data has enabled the site selection panels to pick choice locations for drilling. The knowledge gained from each hole can be extended into the surrounding area. Detailed geophysical surveys were made for most of the selected locations prior to drilling.

The earth sciences have recently matured from an empirical status to one in which substantial theories and hypotheses about major tectonic processes are flourishing. Theories about the origin of magnetic fields and magnetic reversals, about ocean floor spreading and continental drift, and about the thermal history of our planet have led to specific predictions that could be tested best by an enlightened program of sampling of deep sea and continental margin sediments and underlying rocks.

In October 1975, the International Phase of Ocean Drilling (IPOD) began. This international interest, and the true participation of both the scientists and governments of a number of nations, are eloquent testimony to the importance of the work being done by the Deep Sea Drilling Project.

The members of JOIDES and DSDP and the scientists from all interested organizations and nations who have served on the various advisory panels are proud to have been of service and believe that the information and core materials that have been obtained will be of value to students of earth sciences and to all humanity for many years to come.

Deep Sea Drilling Project

MEMBER ORGANIZATIONS OF THE JOINT OCEANOGRAPHIC INSTITUTIONS FOR DEEP EARTH SAMPLING (JOIDES):*

Bundesanstalt für Geowissenschaften und Rohstoffe,
Federal Republic of Germany

University of California at San Diego,
Scripps Institution of Oceanography

Centre National pour l'Exploitation des Océans, Paris

Columbia University, Lamont-Doherty Geological
Observatory

University of Hawaii, Hawaii Institute of Geophysics

University of Miami, Rosenstiel School of Marine and
Atmospheric Science

Natural Environment Research Council, London

Oregon State University, School of Oceanography

University of Rhode Island, Graduate School of
Oceanography

Texas A&M University, Department of Oceanography

University of Tokyo, Ocean Research Institute

University of Washington, Department of
Oceanography

U.S.S.R. Academy of Sciences

Woods Hole Oceanographic Institution

OPERATING INSTITUTION:

Scripps Institution of Oceanography
University of California at San Diego
La Jolla, California
W. A. Nierenberg, Director

DEEP SEA DRILLING PROJECT

Dr. W. A. Nierenberg
Principal Investigator

Dr. M. N. A. Peterson
Project Manager

Mr. Frank C. MacTernan
Principal Engineer and
Deputy Project Manager

Dr. Yves Lancelot
Chief Scientist

Dr. Matthew H. Salisbury
Associate Chief Scientist for
Science Operations

Dr. Russell B. Merrill
Associate Chief Scientist for
Science Services

Dr. William R. Riedel
Curator

Mr. Stanley T. Serocki
Project Development Engineer

Mr. Barry Robson
Operations Manager

Mr. William T. Soderstrom
Finance Administrator

Mr. Robert Olivas
Logistics Officer

Mr. Robert Bower
Contracts Officer

Ms. Sue Strain
Personnel Officer

*Includes member organizations during time of cruise.

Participants aboard GLOMAR CHALLENGER for Leg Sixty-seven

Dr. Jean Aubouin
Co-Chief Scientist
*Département de Géologie Structurale
Université Pierre et Marie Curie
4, place Jussieu
75230 Paris Cedex 05
France*

Dr. Roland von Huene
Co-Chief Scientist
*U.S. Geological Survey
345 Middlefield Road
Menlo Park, California 94025*

Dr. Jacques Azéma
Sedimentologist
*Département de Géologie Structurale
Université Pierre et Marie Curie
4, place Jussieu
75230 Paris Cedex 05
France*

Dr. William T. Coulbourn
Sedimentologist and Shipboard
Science Representative
*Geological Research Division, A-015
Scripps Institution of Oceanography
La Jolla, California 92093*

Dr. Darrel S. Cowan
Igneous Petrologist
*Department of Geological Sciences
University of Washington
Seattle, Washington 98195*

Mr. Joseph A. Curiale
Organic Geochemist
*Department of Geology
University of Oklahoma
Norman, Oklahoma 73019*

Mr. Carlos A. Dengo
Physical Properties Specialist
and Sedimentologist
*Center for Tectonophysics
Texas A&M University
College Station, Texas 77843*

Dr. Richard W. Faas
Physical Properties Specialist
*Department of Geology
Lafayette College
Easton, Pennsylvania 18042*

Dr. William Harrison
Organic Geochemist
*Department of Geology
University of Oklahoma
Norman, Oklahoma 73019*

Dr. Reinhard Hesse
Sedimentologist
*Lehrstuhl für Geologie
Technische Universität
D-0846 Garching b. München
Federal Republic of Germany*
AND
*Department of Geological Sciences
McGill University
Montreal, Quebec
Canada H3A 2A4*

Dr. John W. Ladd
Paleomagnetist
*Galveston Marine Science Institute
University of Texas at Austin
Galveston, Texas 77550*

Dr. Nikita Muzylöv
Paleontologist (nannoplanktons)
*Geological Institute
U.S.S.R. Academy of Sciences
109017 Moscow
U.S.S.R.*

Dr. Tsunemasa Shiki
Sedimentologist
*Department of Geology and Mineralogy
Faculty of Science
Kyoto University
Kyoto, Japan*

Dr. Peter R. Thompson
Paleontologist (foraminifers)
*Lamont-Doherty Geological Observatory
Columbia University
Palisades, New York 10964*

Ms. M. Jean Westberg
Paleontologist (radiolarians)
*Geological Research Division, A-012
Scripps Institution of Oceanography
La Jolla, California 92093*

Mr. Robert R. Knapp
Cruise Operations Manager
*Deep Sea Drilling Project, A-031
Scripps Institution of Oceanography
La Jolla, California 92093*

Mr. Robert Connolly
Weatherman
*National Oceanic and Atmospheric
Administration—National Weather Service
Deep Sea Drilling Project, A-031
Scripps Institution of Oceanography
La Jolla, California 92093*

Captain Loyd Dill
Captain of the Drilling Vessel
*Global Marine, Inc.
8369 Vickers Street
San Diego, California 92111*

Mr. Otis Winton
Drilling Superintendent
*Global Marine, Inc.
8369 Vickers Street
San Diego, California 92111*

Mr. Ted Gustafson
Laboratory Officer
*Deep Sea Drilling Project, A-031
Scripps Institution of Oceanography
La Jolla, California 92093*

Mr. David Benton
Logging Engineer
*Gearhart-Owen Industries, Inc.
P.O. Box 1936
Fort Worth, Texas 76101*

Ms. Kathleen O'Neill
Curatorial Representative
*Lamont-Doherty Geological Observatory
Columbia University
Palisades, New York 10964*

Mr. Kenneth Thompson
Chemist
*Deep Sea Drilling Project, A-031
Scripps Institution of Oceanography
La Jolla, California 92093*

Mr. Dale Dixon
Electronics Technician
*Deep Sea Drilling Project, A-031
Scripps Institution of Oceanography
La Jolla, California 92093*

Mr. Dennis Graham
Marine Technician
*Deep Sea Drilling Project, A-031
Scripps Institution of Oceanography
La Jolla, California 92093*

Mr. Craig Hallman
Marine Technician
*Deep Sea Drilling Project, A-031
Scripps Institution of Oceanography
La Jolla, California 92093*

Mr. Richard Myers
Marine Technician
*Deep Sea Drilling Project, A-031
Scripps Institution of Oceanography
La Jolla, California 92093*

Mr. David Ripley
Marine Technician
*Deep Sea Drilling Project, A-031
Scripps Institution of Oceanography
La Jolla, California 92093*

Mr. Victor Sotelo
Photographer
*Deep Sea Drilling Project, A-031
Scripps Institution of Oceanography
La Jolla, California 92093*

Ms. Barbara Long
Yeoperson
*Deep Sea Drilling Project, A-031
Scripps Institution of Oceanography
La Jolla, California 92093*

Deep Sea Drilling Project Publications Staff

Publications Manager
Marianna Lee

Production Manager
Raymond F. Silk

Art-Photo Supervisor
Virginia L. Roman

Editors
Rosemary Amidei
Marian Bailey
Jan Blakeslee
Susan Orlofsky

Production Assistants
Elaine Bruer
Madeleine A. Mahnken

Production Coordinators
Mary A. Young
Nancy Durham

Illustrators
Myrtali Anagnostopoulos (this volume)
Vicki Cypherd
Tommy F. Hilliard
Elizabeth Peters
Alice N. Thompson

JOIDES Advisory Groups*

Executive Committee

- Dr. John Steele
Woods Hole Oceanographic Institution
- Dr. James D. Baker, Jr.
University of Washington
- Professor Dr. F. Bender
Bundesanstalt für Geowissenschaften und Rohstoffe
- Dr. William W. Hay
Rosenstiel School of Marine and Atmospheric Science
- Dr. G. Ross Heath
Oregon State University
- Dr. Charles E. Helsley
Hawaii Institute of Geophysics
- Sir Peter Kent, F.R.S.
Natural Environment Research Council
- Dr. John A. Knauss
University of Rhode Island
- Dr. Ryuzo Marumo
University of Tokyo
- Dr. William A. Nierenberg
Scripps Institution of Oceanography
- Dr. Worth D. Nowlin, Jr.
Texas A&M University
- Dr. M. N. A. Peterson (ex-officio)
Scripps Institution of Oceanography
- Monsieur Gerard Piketty
Centre National pour l'Exploitation des Océans
- Dr. A. V. Sidorenko
Academy of Sciences of the U.S.S.R.
- Dr. Manik Talwani
Lamont-Doherty Geological Observatory
- Planning Committee**
- Dr. James R. Heirtzler
Woods Hole Oceanographic Institution
- Dr. Helmut Beiersdorf
Bundesanstalt für Geowissenschaften und Rohstoffe
- Dr. William R. Bryant
Texas A&M University
- Dr. Joe R. Cann
University of Newcastle
- Dr. Joe S. Creager
University of Washington
- Dr. J. Dymond
Oregon State University
- Dr. Dennis E. Hayes
Lamont-Doherty Geological Observatory

* Membership at time of cruise.

- Dr. Xavier LePichon
Centre National pour l'Exploitation des Océans
- Dr. Ralph Moberly
Hawaii Institute of Geophysics
- Dr. David G. Moore (ex-officio)
Scripps Institution of Oceanography
- Dr. T. C. Moore, Jr.
University of Rhode Island
- Dr. Noriyuki Nasu
University of Tokyo
- Dr. L. Nikitin
Academy of Sciences of the U.S.S.R.
- Dr. William Riedel (ex-officio)
Scripps Institution of Oceanography
- Dr. Wolfgang Schlager
University of Miami
- Dr. E. L. Winterer
Scripps Institution of Oceanography
- Advisory Panel on Sedimentary Petrology and Physical Properties**
- Dr. A. Richards
Lehigh University
- Dr. R. Bennett
National Oceanic and Atmospheric Administration
- Dr. C. J. Clausen
Norges Geotekniske Institutt
- Dr. J. Conolly
ERA North America Inc.
- Dr. John W. Handin
Texas A&M University
- Dr. George deVries Klein
University of Illinois
- Dr. I. N. McCave
University of East Anglia
- Dr. Frédéric Mélières
Université Pierre et Marie Curie
- Dr. Ralph Moberly (ex-officio)
Hawaii Institute of Geophysics
- Dr. O. H. Pilkey
Duke University
- Dr. Peter Rothe
Geographisches Institut der Universität Mannheim
- Dr. Matthew H. Salisbury (ex-officio)
Scripps Institution of Oceanography

Advisory Panel on Organic Geochemistry

- Dr. Keith Kvenvolden
U.S. Geological Survey
- Dr. Michael A. Arthur (ex-officio)
Scripps Institution of Oceanography
- Dr. Earl W. Baker
Florida Atlantic University
- Dr. Geoffrey Eglinton (ex-officio)
University of Bristol
- Dr. J. Gordon Erdman
Phillips Petroleum Company
- Dr. Eric M. Galimov
Academy of Sciences of the U.S.S.R.
- Dr. John M. Hunt
Woods Hole Oceanographic Institution
- Dr. John W. Kendrick
Shell Development Company
- Dr. Bernd R. T. Simoneit
University of California, Los Angeles
- Dr. B. Tissot
Institut Français du Pétrole
- Dr. Dietrich Welte
*Lehrstuhl für Geologie, Geochemie, und Lagerstätten
des Erdöls und der Kohle*
- Dr. E. L. Winterer (ex-officio)
Scripps Institution of Oceanography

Advisory Panel on Information Handling

- Dr. M. A. Rosenfeld
Woods Hole Oceanographic Institution
- Dr. D. W. Appleman
Smithsonian Institution
- Dr. Thomas A. Davies
Middlebury College
- Dr. H. Glashoff
Bundesanstalt für Geowissenschaften und Rohstoffe
- Dr. John C. Hathaway
U.S. Geological Survey
- Dr. A. Loeblich, Jr.
University of California, Los Angeles
- Dr. M. S. Loughridge
National Oceanic and Atmospheric Administration
- Dr. T. C. Moore, Jr. (ex-officio)
University of Rhode Island
- Dr. John L. Usher (ex-officio) (deceased)
Scripps Institution of Oceanography
- Dr. V. V. Zdorovenin
Academy of Sciences of the U.S.S.R.

Industrial Liaison Panel

- Mr. W. A. Roberts
Phillips Petroleum Company
- Mr. R. L. Adams
Continental Oil Company

- Dr. N. P. Budnikov
Ministry of Geology of the U.S.S.R.
- Mr. Melvin J. Hill
Gulf Oil Corporation
- Dr. Ing. Guenter Peterson
Deutsche Schachtbau und Tiefbohrergesellschaft mbH
- Monsieur Gilbert Rutman
Société Nationale des Pétroles d'Aquitaine
- Mr. G. Williams
United Kingdom Offshore Operators Association, Ltd.

Advisory Panel on Ocean Crust

- Dr. Paul J. Fox
State University of New York at Albany
- Dr. N. A. Bogdanov
Academy of Sciences of the U.S.S.R.
- Dr. Robert G. Coleman
U.S. Geological Survey
- Dr. J. Dymond (ex-officio)
Oregon State University
- Dr. Rolf Emmerman
Universität Karlsruhe
- Dr. Jean Francheteau
Centre National pour l'Exploitation des Océans
- Dr. H. P. Johnson
University of Washington
- Dr. Roger L. Larson
Lamont-Doherty Geological Observatory
- Dr. Ralph Moberly (ex-officio)
Hawaii Institute of Geophysics
- Dr. James H. Natland (ex-officio)
Scripps Institution of Oceanography
- Dr. John Orcutt
Scripps Institution of Oceanography
- Dr. M. Ozima
University of Tokyo
- Dr. John Tarney
University of Birmingham
- Dr. M. Treuil
Institut Physique du Globe

Advisory Panel on Ocean Margin (Active)

- Dr. Roland von Huene
U.S. Geological Survey
- Dr. Michael A. Arthur (ex-officio)
Scripps Institution of Oceanography
- Dr. Michael Audley-Charles
Queen Mary College
- Dr. René Blanchet
Université de Bretagne Occidentale
- Dr. Creighton Burk
University of Texas, Austin
- Dr. Joe S. Creager (ex-officio)
University of Washington
- Dr. W. R. Dickinson
Stanford University

Dr. Y. I. Dmitriev
Academy of Sciences of the U.S.S.R.
 Dr. D. M. Hussong
Hawaii Institute of Geophysics
 Dr. Daniel Karig
Cornell University
 Dr. Kazuo Kobayashi
University of Tokyo
 Dr. Keith Kvenvolden (ex-officio)
U.S. Geological Survey
 Dr. Xavier LePichon (ex-officio)
Centre National pour l'Exploitation des Océans
 Dr. H. W. Walther
Bundesanstalt für Geowissenschaften und Rohstoffe
 Dr. Joel S. Watkins
Gulf Research and Development Company

Advisory Panel on Ocean Margin (Passive)

Dr. Robert E. Sheridan
University of Delaware
 Dr. Helmut Beiersdorf (ex-officio)
Bundesanstalt für Geowissenschaften und Rohstoffe
 Dr. D. Bernoulli
Universität Basel
 Dr. William R. Bryant (ex-officio)
Texas A&M University
 Dr. Joseph R. Curry
Scripps Institution of Oceanography
 Mr. John I. Ewing
Woods Hole Oceanographic Institution
 Mr. John A. Grow
U.S. Geological Survey
 Dr. K. Hinz
Bundesanstalt für Geowissenschaften und Rohstoffe
 Dr. John M. Hunt (ex-officio)
Woods Hole Oceanographic Institution
 Dr. H. Kagami
University of Tokyo
 Dr. L. Montadert
Institut Français du Pétrole
 Dr. David G. Moore (ex-officio)
Scripps Institution of Oceanography
 Professor V. Nalivkin
Liteynyi Prospect, Leningrad
 Dr. D. G. Roberts
Institute of Oceanographic Sciences, Surrey
 Professor Dr. E. Seibold
Universität Kiel
 Dr. S. Snelson
Shell Development Company
 Dr. J. Thiede
Universitetet i Oslo
 Dr. P. R. Vail
Exxon Production Research Company

Advisory Panel on Pollution Prevention and Safety

Dr. Louis E. Garrison
U.S. Geological Survey
 Dr. George Claypool
U.S. Geological Survey
 Dr. Paul J. Fox (ex-officio)
State University of New York at Albany
 Dr. H. Grant Goodell
University of Virginia
 Dr. Arthur E. Green
Exxon Production Research Company
 Dr. J. R. Heirtzler (ex-officio)
Woods Hole Oceanographic Institution
 Mr. J. Laherrer
Compagnie Française des Pétroles
 Dr. Yves Lancelot (ex-officio)
Centre National pour l'Exploitation des Océans
 Dr. A. E. Maxwell (ex-officio)
Woods Hole Oceanographic Institution
 Dr. A. Mayer-Gurr
Urach, Federal Republic of Germany
 Dr. Robert E. Sheridan (ex-officio)
University of Delaware
 Dr. G. D. Taylor
British Petroleum Company, Ltd.
 Dr. Roland von Huene (ex-officio)
U.S. Geological Survey
 Dr. S. White (ex-officio)
Scripps Institution of Oceanography
Advisory Panel on Inorganic Geochemistry
 Dr. Joris M. Gieskes
Scripps Institution of Oceanography
 Dr. W. B. Clarke
McMaster University
 Dr. D. S. Cronan
Royal School of Mines, London
 Dr. J. Dymond (ex-officio)
Oregon State University
 Dr. Margaret Leinen
University of Rhode Island
 Dr. Frank T. Manheim
U.S. Geological Survey
 Dr. Kenneth A. Pisciotto (ex-officio)
Scripps Institution of Oceanography
 Dr. I. D. Ryabchikov
Academy of Sciences of the U.S.S.R.
 Dr. Samuel M. Savin
Case Western Reserve University
 Dr. Erwin Suess
Oregon State University
 Dr. Y. Tardy
Laboratoire de Pédologie et Géochimie, Toulouse
 Dr. K. H. Wedepohl
Geochemisches Institut der Universität, Göttingen

Advisory Panel on Ocean Paleoenvironment

- Dr. Yves Lancelot
Centre National pour l'Exploitation des Océans
- Dr. Charles Adelseck, Jr. (ex-officio)
Scripps Institution of Oceanography
- Dr. Wolfgang Berger
Scripps Institution of Oceanography
- Dr. G. Eglinton (ex-officio)
University of Bristol
- Dr. Kenneth Hsü
Eidgenössische Technische Hochschule, Zürich
- Dr. James C. Ingle
Stanford University
- Dr. Hugh C. Jenkyns
University of Oxford
- Dr. James P. Kennett
University of Rhode Island
- Dr. T. C. Moore, Jr. (ex-officio)
University of Rhode Island
- Dr. Michael Sarnthein
Universität Kiel
- Dr. N. Shackleton
University of Cambridge
- Dr. W. V. Sliter
U.S. Geological Survey
- Dr. Y. Takayanagi
Tohoku University
- Dr. Hans Thierstein
Scripps Institution of Oceanography
- Dr. P. P. Timofeev
Academy of Sciences of the U.S.S.R.
- Dr. E. L. Winterer (ex-officio)
Scripps Institution of Oceanography
- Advisory Panel on Site Surveying**
- Dr. E. J. W. Jones
University of London
- Dr. Paul J. Fox (ex-officio)
State University of New York at Albany
- Dr. Dennis E. Hayes (ex-officio)
Lamont-Doherty Geological Observatory
- Dr. I. Kosminskaya
Academy of Sciences of the U.S.S.R.
- Dr. Yves Lancelot (ex-officio)
Centre National pour l'Exploitation des Océans
- Dr. Brian T. R. Lewis
University of Washington
- Dr. Shozaburo Nagumo
University of Tokyo
- Dr. Philip D. Rabinowitz (ex-officio)
Lamont-Doherty Geological Observatory
- Dr. Vince Renard
Centre Océanologique de Bretagne

- Dr. Wolfgang Schlager (ex-officio)
University of Miami
- Dr. Robert E. Sheridan (ex-officio)
University of Delaware
- Dr. Roland von Huene (ex-officio)
U.S. Geological Survey
- Dr. Wilfried Weigel
Universität Hamburg
- Dr. S. White (ex-officio)
Scripps Institution of Oceanography

Stratigraphic Correlations Panel

- Dr. R. H. Benson
Smithsonian Institution
- Dr. I. Basov
Academy of Sciences of the U.S.S.R.
- Dr. P. Čeppek
Bundesanstalt für Geowissenschaften und Rohstoffe
- Dr. Joe S. Creager (ex-officio)
University of Washington
- Dr. D. Graham Jenkins
Open University
- Dr. Catherine Nigrini
La Habra Heights, California
- Dr. Richard Z. Poore
U.S. Geological Survey
- Dr. J. B. Saunders
Naturhistorisches Museum, Basel
- Dr. J. L. Usher (ex-officio) (deceased)
Scripps Institution of Oceanography

Downhole Measurements Panel

- Dr. R. Hyndman
Pacific Geoscience Centre
- Dr. Heinz Beckmann
Technische Universität Clausthal
- Mr. R. E. Boyce (ex-officio)
Scripps Institution of Oceanography
- Dr. William R. Bryant (ex-officio)
Texas A&M University
- Dr. N. Christensen
University of Washington
- Mr. A. H. Jageler
Amoco Production Research Company
- Dr. D. H. Matthews
University of Cambridge
- Dr. Yuri Neprochnov
Academy of Sciences of the U.S.S.R.
- Dr. A. Richards
Lehigh University
- Dr. O. Serra
ELF-ERAP
- Mr. J. R. Severns
McCulloh Oil Corporation

Deep Sea Drilling Project

SAMPLE DISTRIBUTION POLICY*

Distribution of Deep Sea Drilling samples for investigation will be undertaken in order to (1) provide supplementary data to support GLOMAR CHALLENGER scientists in achieving the scientific objectives of their particular cruise, and in addition to serve as a mechanism for contributions to the *Initial Reports*; (2) provide individual investigators with materials that are stored with samples for reference and comparison purposes.

The National Science Foundation has established a Sample Distribution Panel to advise on the distribution of core materials. This panel is chosen in accordance with usual Foundation practices, in a manner that will assure advice in the various disciplines leading to a complete and adequate study of the cores and their contents. Funding for the proposed research must be secured separately by the investigator. It cannot be provided through the Deep Sea Drilling Project.

The Deep Sea Drilling Project's Curator is responsible for distributing the samples and controlling their quality, as well as preserving and conserving core material. He also is responsible for maintaining a record of all samples that have been distributed, shipboard and subsequent, indicating the recipient and the nature of the proposed investigation. This information is made available to all investigators of DSDP materials as well as to other interested researchers on request.

The distribution of samples is made directly from one of the two existing repositories, Lamont-Doherty Geological Observatory and Scripps Institution of Oceanography, by the Curator or his designated representative.

1. *Distribution of Samples for Research Leading to Contributions to Initial Reports*

Any investigator who wishes to contribute a paper to a given volume of the *Initial Reports* may write to the Chief Scientist, Deep Sea Drilling Project (A-031), Scripps Institution of Oceanography, University of California at San Diego, La Jolla, California 92093, U.S.A., requesting samples from a forthcoming cruise. Requests for a specific cruise should be received by the Chief Scientist two months in advance of the departure of the cruise in order to allow time for the review and consideration of all requests and to establish a suitable shipboard sampling program. The request should include a statement of the nature

of the study proposed, size and approximate number of samples required to complete the study, and any particular sampling technique or equipment that might be required. The requests will be reviewed by the Chief Scientist of the Project and the cruise co-chief scientists; approval will be given in accordance with the scientific requirements of the cruise as determined by the appropriate JOIDES advisory panel(s). If approved, the requested samples will be taken, either by the shipboard party if the workload permits or by the curatorial staff shortly following the return of the cores to the repository. Proposals must be of a scope to ensure that samples can be processed and a contribution completed in time for publication in the *Initial Reports*. Except for rare, specific instances involving ephemeral properties, sampling will not exceed one-quarter of the volume of core recovered, with no interval being depleted and one-half of all core being retained as an archive. Shipboard sampling shall not exceed approximately 100 igneous samples per investigator; in all cases co-chief scientists are requested to keep sampling to a minimum.

The co-chief scientists may elect to have special studies of selected core samples made by other investigators. In this event the names of these investigators and complete listings of all materials loaned or distributed must be forwarded, if possible prior to the cruise or as soon as possible following the cruise, to the Chief Scientist through the DSDP Staff Science Representative for that particular cruise. In such cases, all requirements of the Sample Distribution Policy shall also apply.

If a dispute arises or if a decision cannot be reached in the manner prescribed, the NSF Sample Distribution Panel will conduct the final arbitration.

Any publication of results other than in the *Initial Reports* within twelve (12) months of the completion of the cruise must be approved and authored by the whole shipboard party and, where appropriate, shore-based investigators. After twelve months, individual investigators may submit related papers for open publication provided they have submitted their contributions to the *Initial Reports*. A paper too late for inclusion in the *Initial Reports* for a specific cruise may not be published elsewhere until publication of that *Initial Reports* for which it was intended. Notice of submission to other journals and a copy of the article should be sent to the DSDP Staff Science Representative for that leg.

*Revised October 1976

2. *Distribution of Samples for Research Leading to Publication Other Than in Initial Reports*

- A. Researchers intending to request samples for studies beyond the scope of the *Initial Reports* should first obtain sample request forms from the Curator, Deep Sea Drilling Project (A-031), Scripps Institution of Oceanography, University of California at San Diego, La Jolla, California 92093, U.S.A. On the forms the researcher is requested to specify the quantities and intervals of the core required, make a clear statement of the proposed research, state time required to complete and submit results for publication, and specify the status of funding and the availability of equipment and space foreseen for the research.

In order to ensure that all requests for highly desirable but limited samples can be considered, approval of requests and distribution of samples will not be made prior to 2 months after publication of the Initial Core Descriptions (ICD). ICD's are required to be published within 10 months following each cruise. The only exceptions to this policy will be for specific instances involving ephemeral properties. Requests for samples can be based on the Initial Core Descriptions, copies of which are on file at various institutions throughout the world. Copies of original core logs and data are kept on open file at DSDP and at the Repository at Lamont-Doherty Geological Observatory, Palisades, New York. Requests for samples from researchers in industrial laboratories will be handled in the same manner as those from academic organizations, with the same obligation to publish results promptly.

- B. (1) The DSDP Curator is authorized to distribute samples to 50 ml per meter of core. Requests for volumes of material in excess of this amount will be referred to the NSF Sample Distribution Panel for review and approval. Experience has shown that most investigations can be accomplished with samples 10 ml or smaller. All investigators are encouraged to be as judicious as possible with regard to sample size and, especially, frequency within any given core interval. The Curator will not automatically distribute any parts of the cores which appear to be in particularly high demand; requests for such parts will be referred to the Sample Distribution Panel for review. Requests for samples from thin layers or important stratigraphic boundaries will also require Panel review.

(2) If investigators wish to study certain properties which may deteriorate prior to the normal availability of the samples, they may request that the normal waiting period not apply. All such requests must be reviewed by the Curator and approved by the NSF Sample Distribution Panel.

- C. Samples will not be provided prior to assurance that funding for sample studies either exists or is not needed. However, neither formal approval of sample requests nor distribution of samples will be made until the appropriate time (Item A). If a sample request is dependent, either wholly or in part, on proposed funding, the Curator is prepared to provide to the organization to whom the funding proposal has been submitted any information on the availability (or potential availability) of samples that it may request.

- D. Investigators receiving samples are responsible for:

(1) publishing significant results; contributions shall not be submitted for publication prior to 12 months following the termination of the appropriate leg;

(2) acknowledging, in publications, that samples were supplied through the assistance of the U.S. National Science Foundation and others as appropriate;

(3) submitting five (5) copies (for distribution to the Curator's file, the DSDP repositories, the GLOMAR CHALLENGER's library, and the National Science Foundation) of all reprints of published results to the Curator, Deep Sea Drilling Project (A-031), Scripps Institution of Oceanography, University of California at San Diego, La Jolla, California 92093, U.S.A.;

(4) returning, in good condition, the remainders of samples after termination of research, if requested by the Curator.

- E. Cores are made available at repositories for investigators to examine and to specify exact samples in such instances as may be necessary for the scientific purposes of the sampling, subject to the limitations of B (1 and 2) and D, above, with specific permission of the Curator or his delegate.

- F. Shipboard-produced smear slides of sediments and thin sections of indurated sediments, igneous, and metamorphic rocks will be returned to the appropriate repository at the end of each cruise or at the publication of

the *Initial Reports* for that cruise. These smear slides and thin sections will form a reference collection of the cores stored at each repository and may be viewed at the respective repositories as an aid in the selection of core samples.

3. Reference Centers

As a separate and special category, samples will be distributed for the purpose of establishing up to five reference centers where paleontologic materials will be available for reference and comparison purposes. The first of these reference centers has been approved at Basel, Switzerland.

Data Distribution Policy

Data gathered on board D/V *Glomar Challenger* and in DSDP shore laboratories are available to all researchers 12 months after the completion of each cruise. The files are part of a coordinated computer database, fully searchable and coordinated to other files. Data sets representing a variety of geologic environments can be arranged for researchers who may wish to manipulate the database directly.

Most data requests are filled free of charge, except if they are unusually large or complex and direct costs exceed \$50.

When data are used for publication, the National Science Foundation must be acknowledged and DSDP provided with five reprints for inclusion in the DSDP index of publications and investigations. Requests for data should be submitted to:

Data Manager, Deep Sea Drilling Project
Scripps Institution of Oceanography (A-031)
University of California, San Diego
La Jolla, California 92093

Telephone: (714) 452-3526
Cable Address: SIOCEAN

I. The database includes files generally available both in digital form on magnetic tape and as microfilm copies of the original observation forms.

A. Geophysical data include underway bathymetry, magnetics, and sub-bottom profiles; bathymetry data exist both as 12-kHz and 3.5-kHz records. Underway data are processed by DSDP and the Geological Data Center at Scripps Institution of Oceanography (SIO). Seismic records are available in microfilm and photographic prints.

B. Physical property data obtained on board *Glomar Challenger* include:

Analytical water content, porosity, and density
Density and porosity by Gamma Ray Attenuation Porosity Evaluator (GRAPE)
Acoustic velocity by Hamilton Frame Method
Thermal conductivity
Heat flow (*in situ*)
Natural gamma radiation (discontinued after Leg 19)
Well logs

C. Sediment data obtained on board ship and from core samples in DSDP shore laboratories include:

Core photographs
Visual core descriptions
Smear slide descriptions
X-ray diffraction
X-ray fluorescence
Total carbon, organic carbon, and carbonate determinations
Grain-size determinations (sand, silt, clay)
Interstitial water chemistry
Gas chromatography

D. Igneous rock data include:

Core photographs
Visual core descriptions
Rock chemistry
Paleomagnetism
Thin-section descriptions

E. Paleontologic data include fossil names, abundance, preservation, and age of sample and are available, for selected sites, for Tertiary and Mesozoic taxa. Range charts can be generated from the database, using the line printer. A glossary of fossil names is available on microfiche or magnetic tape.

F. Ancillary files include:

Site positions
Sub-bottom depths of cores
Master Guide File (a searchable core data summary file)

II. Additional publications, aids to research, are periodically updated and distributed to libraries. Single copies, at no charge, are distributed on microfiche at 48X magnification, except for the Data Datas (C, opposite), which are at 24X. They include:

A. Guides to DSDP Core Materials, a series of printed summaries containing maxima, minima, and typical values for selected observations. Guides are available for each of the

major ocean basins and for Phases I, II, and III of the drilling program. The source data summary file is also available.

- B. Index to *Initial Reports* and Subsequent Publications and Investigations is a comprehensive key word index to chapters of the *Initial Reports* and to papers and investigations in progress which cite DSDP samples or data. The Index and its annotated bibliography serve to inform researchers of other investigators working on similar projects. Each paper is assigned key words for field of study, material, geographic area, and geologic age. A complete citation, including the assigned key words, is printed in the bibliography. Key words are permuted to form a comprehensive cross-index to the author reference list.

- C. Data Data, a series of informal memoranda providing a quick reference to accessible data, is available on microfiche. Also available is a site position map to assist researchers in large-area studies. (Site positions are plotted on a bathymetry map compiled by the SIO Geologic Data Center.)
- D. Data Retrieval and Application Computer Programs to perform data management and retrieval functions and a set of programs designed to provide special graphic displays of data are available; they may be of limited use because of differences in computer hardware. All current programs are written in ALGOL for a Burroughs 7800 computer system. Software inquiries may be addressed to the Data Manager.

CONTENTS

Chapter	Page	Chapter	Page
ACKNOWLEDGMENTS	1	12. CENOZOIC SILICOFLAGELLATES FROM OFFSHORE GUATEMALA, DEEP SEA DRILLING PROJECT SITE 495	425
PART I: INTRODUCTION AND SITE REPORTS		D. Bukry	
1. INTRODUCTION, SUMMARY, AND EXPLANATORY NOTES, THE MIDDLE AMERICA TRENCH TRANSECT, DEEP SEA DRILLING PROJECT LEG 67	5	13. DIATOM BIOSTRATIGRAPHY OF SITES 495, 496, AND 497, DEEP SEA DRILLING PROJECT LEG 67	447
W. T. Coulbourn		H. E. Harper, Jr., J. Rider, and W. H. Abbott	
2. SITE 494: MIDDLE AMERICA TRENCH LOWER SLOPE	27	14. DISTRIBUTION OF DIATOMS IN PLIOCENE AND PLEISTOCENE DEPOSITS FROM THE MIDDLE AMERICA TRENCH OFF GUATEMALA....	455
Shipboard Scientific Party		A. P. Jousé, G. K. Kazarina, and V. V. Mukhina	
3. SITE 495: COCOS PLATE—MIDDLE AMERICA TRENCH OUTER SLOPE	79	PART III: SEDIMENTOLOGY	
Shipboard Scientific Party		15. MIDDLE AMERICA NEOGENE EXPLOSIVE VOLCANISM AND ASH LAYERS: EVIDENCE FROM THE MIDDLE AMERICA TRENCH TRANSECT, DEEP SEA DRILLING PROJECT LEG 67	475
4. SITE 496: MIDDLE AMERICA TRENCH UPPER SLOPE	143	J.-P. Cadet, A. Pouclet, Y. Thisse, J. M. Bardintzeff, and J. Azéma	
Shipboard Scientific Party		16. PRELIMINARY CORRELATION OF QUATERNARY VOLCANIC ASHES FROM THE MIDDLE AMERICA TRENCH OFF GUATEMALA, DEEP SEA DRILLING PROJECT LEG 67	493
5. SITE 497: MIDDLE AMERICA TRENCH UPPER SLOPE	193	W. I. Rose, Jr., T. J. Bornhorst, and J. W. Drexler	
Shipboard Scientific Party		17. INSOLUBLE RESIDUES OF THE FINE-GRAINED SEDIMENTS FROM THE TRENCH TRANSECT SOUTH OF GUATEMALA, DEEP SEA DRILLING PROJECT LEG 67	497
6. SITE 498: MIDDLE AMERICA TRENCH LOWER SLOPE	245	C. Heinemann and H. Füchtbauer	
Shipboard Scientific Party		18. PROVENANCE OF DETRITAL SEDIMENTS FROM THE MIDDLE AMERICA TRENCH TRANSECT OFF GUATEMALA, DEEP SEA DRILLING PROJECT LEG 67	507
7. SITE 499: MIDDLE AMERICA TRENCH AXIS	267	S. Prasad and R. Hesce	
Shipboard Scientific Party		19. MINERALOGY OF SEDIMENTS FROM THE MIDDLE AMERICA TRENCH (GUATEMALA TRANSECT)	515
8. SITE 500: MIDDLE AMERICA TRENCH AXIS	315	V. Kurnosov, I. Murdmaa, V. Kazakova, V. Mikhina, and A. Shevchenko	
Shipboard Scientific Party			
PART II: PALEONTOLOGY AND BIOSTRATIGRAPHY			
9. FORAMINIFERS OF THE MIDDLE AMERICA TRENCH	351		
P. R. Thompson			
10. NANNOPLANKTON STRATIGRAPHY OF LEG 67 DRILL SITES	383		
N. Muzylöv			
11. RADIOLARIANS FROM THE MIDDLE AMERICA TRENCH OFF GUATEMALA, DEEP SEA DRILLING PROJECT LEG 67 ...	401		
M. J. Westberg and W. R. Riedel			

Chapter	Page	Chapter	Page
20. X-RAY MINERALOGY STUDIES, LEG 67 (SITES 494–500): THE MIDDLE AMERICA TRENCH TRANSECT OFF GUATEMALA .. C. Latouche and N. Maillet	529	29. RELATIONSHIP BETWEEN SEDIMENTARY FACIES AND INTERSTITIAL WATER CHEMISTRY OF SLOPE, TRENCH, AND COCOS PLATE SITES FROM THE MIDDLE AMERICA TRENCH TRANSECT, ACTIVE MARGIN OFF GUATEMALA, DEEP SEA DRILLING PROJECT LEG 67	603
21. FEATURES OF GRAIN-SIZE DISTRIBUTION AND MINERAL COMPOSITION OF TURBIDITIC SEDIMENTS FROM THE MIDDLE AMERICA TRENCH OFF GUATEMALA	537	W. E. Harrison, R. Hesse, and J. M. Gieskes	
T. Shiki, T. Yamasaki, and K. Hisatomi		PART VI: PHYSICAL PROPERTIES AND STRUCTURE	
PART IV: IGNEOUS ROCKS		30. GRAVITATIONAL COMPACTION PATTERNS DETERMINED FROM SEDIMENT CORES RECOVERED DURING THE DEEP SEA DRILLING PROJECT LEG 67 GUATEMALAN TRANSECT: CONTINENTAL SLOPE, MIDDLE AMERICA TRENCH, AND COCOS PLATE.....	617
22. SECONDARY MINERALS IN BASALTS FROM THE MIDDLE AMERICA TRENCH, LEG 67	551	R. W. Faas	
V. B. Kurnosov and A. Ya. Shevchenko		31. PLASTICITY CHARACTERISTICS OF THE QUATERNARY SEDIMENTS OF THE GUATEMALAN CONTINENTAL SLOPE, MIDDLE AMERICA TRENCH, AND COCOS PLATE—LEG 67, DEEP SEA DRILLING PROJECT	639
23. VOLCANIC ROCKS FROM LEG 67 SITES: MINERALOGY AND GEOCHEMISTRY	557	R. W. Faas	
R. C. Maury, H. Bougault, J. L. Joron, D. Girard, M. Treuil, J. Azéma, and J. Aubouin		32. ORIGIN OF “VEIN STRUCTURE” IN SLOPE SEDIMENTS ON THE INNER SLOPE OF THE MIDDLE AMERICA TRENCH OFF GUATEMALA	645
24. BASALTS OF THE MIDDLE AMERICA TRENCH (GUATEMALA TRANSECT) AND THEIR CORRELATION WITH OCEANIC AND ISLAND-ARC THOLEIITES	577	D. S. Cowan	
Y. I. Dmitriev		33. A STRUCTURAL ANALYSIS OF CORES FROM THE LEG 67 TRANSECT ACROSS THE MIDDLE AMERICA TRENCH—OFFSHORE GUATEMALA	651
PART V: GEOCHEMISTRY		C. A. Dengo	
25. BETA-SITOSTEROL AND STIGMA-STEROL IN SLOPE SEDIMENTS	587	PART VII: GEOPHYSICAL SURVEYS AND REGIONAL GEOLOGY	
J. A. Curiale and W. E. Harrison		34. SOME PALEOMAGNETIC RESULTS FROM DEEP SEA DRILLING PROJECT LEG 67 OFF GUATEMALA	669
26. GAS HYDRATES IN SEDIMENTS OF HOLES 497 AND 498A, DEEP SEA DRILLING PROJECT LEG 67	591	W. A. Gose	
W. E. Harrison and J. A. Curiale		35. INTERPRETATION OF SEISMIC-REFLECTION DATA OF THE MIDDLE AMERICA TRENCH OFFSHORE GUATEMALA	675
27. DISTRIBUTION, ORIGIN, AND HYDRO-CARBON POTENTIAL OF ORGANIC MATTER IN SEDIMENTS FROM THE PACIFIC MARGIN OF GUATEMALA	595	J. W. Ladd, A. K. Ibrahim, K. J. McMillen, G. V. Latham, and R. E. von Huene	
C. P. Summerhayes and D. Gilbert			
28. COAL PETROLOGICAL STUDIES OF SEDIMENTS FROM SITES 496, 499, AND 500, DEEP SEA DRILLING PROJECT LEG 67, MIDDLE AMERICA TRENCH AND SLOPE OFF GUATEMALA	601		
M. Wolf			

Chapter	Page	Chapter	Page
36. STRATIGRAPHY AND STRUCTURES OF THE MIDDLE AMERICA TRENCH: DEEP SEA DRILLING PROJECT LEG 67 TRANSECT OFF GUATEMALA.....	691	43. SUMMARY—LEG 67, MIDDLE AMERICA TRENCH TRANSECT OFF GUATEMALA.....	775
W. T. Coulbourn		R. von Huene, and J. Aubouin	
37. NEAR-BOTTOM OBSERVATIONS OF THE MIDDLE AMERICA TRENCH OFF GUATEMALA.....	707	PART IX: ERRATUM	
G. F. Moore, P. Lonsdale, and R. von Huene		ERRATUM, VOLUME 60: TABLE 2, CHAPTER 18, X-RAY DIFFRACTION ANALYSES.....	797
38. GEOPHYSICAL OBSERVATIONS OF SLOPE DEPOSITS, MIDDLE AMERICA TRENCH OFF GUATEMALA	719	U. Nagel, G. Müller, and D. Schumann	
R. von Huene, J. Ladd, and I. Norton		BACK - POCKET FOLDOUTS	
39. A SEABEAM SURVEY OF THE LEG 67 AREA (MIDDLE AMERICA TRENCH OFF GUATEMALA).....	733	CHAPTER 9, TABLE 2. PLANKTONIC FORAMINIFERS AND OTHER MICROCONSTITUENTS FROM SITE 495.	
J. Aubouin, J.-F. Stephan, V. Renard, J. Roump, and P. Lonsdale		P. R. Thompson	
40. THE GUATEMALAN MARGIN, THE NICOYA COMPLEX, AND THE ORIGIN OF THE CARIBBEAN PLATE.....	739	CHAPTER 9, TABLE 5. PLANKTONIC FORAMINIFERS AND OTHER MICROCONSTITUENTS FROM SITE 494.	
J. Azéma and J. Tournon		P. R. Thompson	
41. THE MIDDLE AMERICA TRENCH IN THE GEOLOGICAL FRAMEWORK OF CENTRAL AMERICA	747	CHAPTER 14, TABLE 2. CODED VALUES FOR DIATOM ABUNDANCES IN SAMPLES FROM SITE 495.	
J. Aubouin, J. Azéma, J.-Ch. Carfantan, A. Demant, C. Rangin, M. Tardy, and J. Tournon		A. P. Jousé, G. K. Kazarina, and V. V. Mukhina	
PART VIII: SYNTHESSES		CHAPTER 14, TABLE 3. CODED VALUES FOR DIATOM ABUNDANCES IN SAMPLES FROM SITE 496.	
42. A SUMMARY OF THE SEDIMENTOLOGY OF DEEP SEA DRILLING PROJECT LEG 67 SITES: THE MIDDLE AMERICA TRENCH AND SLOPE OFF GUATEMALA— AN ACTIVE MARGIN TRANSECT	759	A. P. Jousé, G. K. Kazarina, and V. V. Mukhina	
W. T. Coulbourn, R. Hesse, J. Azéma, and T. Shiki		CHAPTER 35, PLATE 1. SEISMIC REFLECTION DATA OF THE MIDDLE AMERICA TRENCH OFFSHORE GUATEMALA.	
		J. W. Ladd, A. K. Ibrahim, K. J. McMillen, G. V. Latham, and R. E. von Huene	
		CHAPTER 39. A SEABEAM MAP OF THE LEG 67 AREA.	
		J. Aubouin, J.-F. Stephan, V. Renard, J. Roump, and P. Lonsdale	

ACKNOWLEDGMENTS

The scientific party of Leg 67 gratefully acknowledges the efforts of Captain Dill and his ship and drilling crews for their enthusiastic help in getting the samples that we have studied. We thank Bob Knapp for his balanced consideration of our scientific goals versus the restraints imposed by difficult drilling conditions. Gus Gustafson and the Scripps technical crew provided us with excellent logistical and technical support. The production staff of DSDP has been very helpful in accomplishing the publication of this volume. Particular thanks go to Elaine Bruer and Madeleine Mahnken for their typesetting and drafting of the Core Descriptions (barrel sheets). Nancy Durham served as communications-central for our correspondence, and Lola Boyce typed and retyped many of the chapters. Our editor, Susan Orlofsky, repaired our grammatic shortcomings, convoluted sentences, and missing literature citations. Myrtali Anagnostopoulos drafted the bulk of the illustrations, and Mary Young monitored the paste-up of the volume.

We thank the government of Guatemala for permitting us to drill in their territorial waters, and we remember with great pleasure Gabriel Dengo's warm welcome and the field trip he and his colleagues gave us in Nicoya, Costa Rica. Most important, we thank the people and the governments of the IPOD member countries for providing the funds that have supported our efforts to create what we consider an important scientific contribution.