



LA JOLLA, CALIFORNIA 92093

SCRIPPS INSTITUTION OF OCEANOGRAPHY
DEEP SEA DRILLING PROJECT

Dear Friends and Recipients of the "Initial Reports of the Deep Sea Drilling Project":

This Volume 93 of the "Initial Reports of the Deep Sea Drilling Project" is the last to be printed and distributed of the now completed set of 96 volumes corresponding to the 96 voyages of the drilling vessel, Glomar Challenger, 1968-1983.

A final volume, containing a comprehensive index to all 96 volumes, is being prepared and will be sent to this same active distribution list for the "Initial Reports". It may be as late as early next Federal fiscal year, late fall of 1987, before this distribution is made.

By the time this Volume 93 has been distributed to you, the Deep Sea Drilling Project offices, at Scripps Institution of Oceanography, will have been closed. Please address inquiries concerning the "Initial Reports of the Deep Sea Drilling Project" to Ocean Drilling Program, Texas Agricultural and Mechanical University, College Station, Texas 77840.

A last and hearty thank you to all who have participated in or contributed to, or found useful or enjoyed, the work and results of the Deep Sea Drilling Project.

Very sincerely,

M. N. A. Peterson
Deep Sea Drilling Project

Site 603, Lower Continental Rise

A. Blake Ridge Formation/Bermuda Rise Formation. The contact between lithologic Units I and II is seen as a color change and an unconformity, separating reddish brown, lower Miocene (?), silt-rich claystones from grayish green, lower Eocene radiolarian claystones. This contact, which also marks the seismic Reflector A complex ($A^U/A^T/A^C$), occurs at 603B-15-4, 46 cm.

B. Bermuda Rise Formation. 603B-16-3, 50–85 cm. Lithologic Unit II is composed of Eocene radiolarian claystones (their color ranging from reddish brown to grayish green), interbedded with dark gray to black claystones with greater amounts of Mn and Fe oxides. The reddish brown claystones contain more hematite and iron oxides than the grayish green claystones, but all Unit II claystones show bioturbation and burrow mottling.

C. Blake-Bahama Formation. 603B-75-2, 70–105 cm. A typical cycle of Lower Cretaceous (Valanginian) sedimentary rocks in lithologic Unit V, showing a dark gray claystone turbidite overlain by lighter gray laminated nannofossil limestones and white bioturbated nannofossil limestones.

D. A Lower Cretaceous (Barremian-Aptian) ammonite was discovered on the upper bedding surface of Sample 603B-44-3, 140–150 cm (right), originally selected as an interstitial water sample. The other half of the specimen (left) was found at 603B-44-3, 140 cm, divided between the work and archive halves of this section.

Site 604, Upper Continental Rise

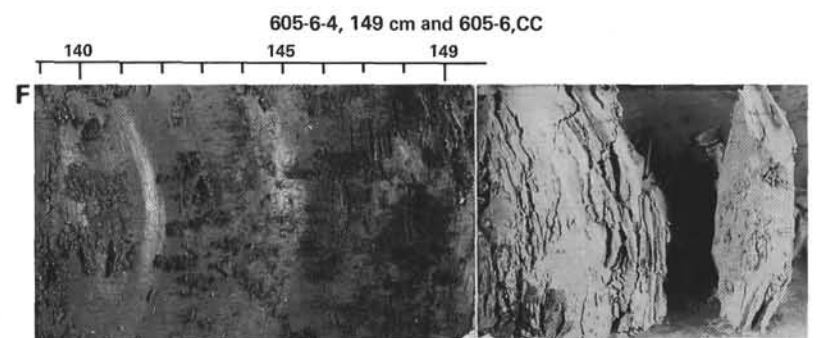
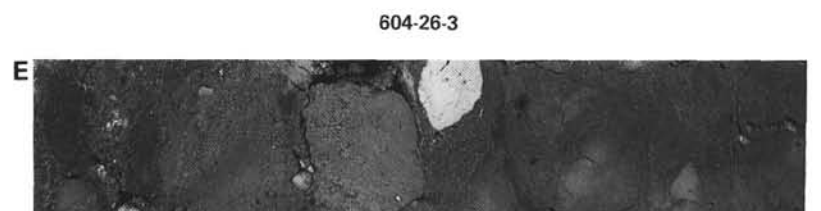
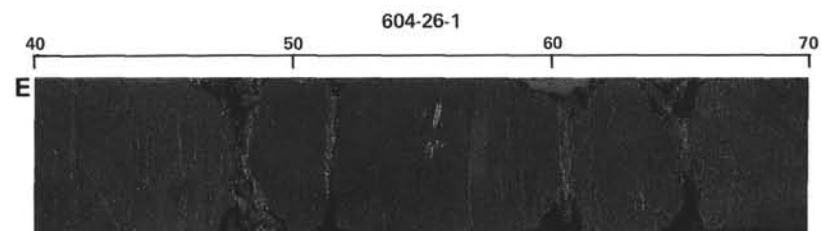
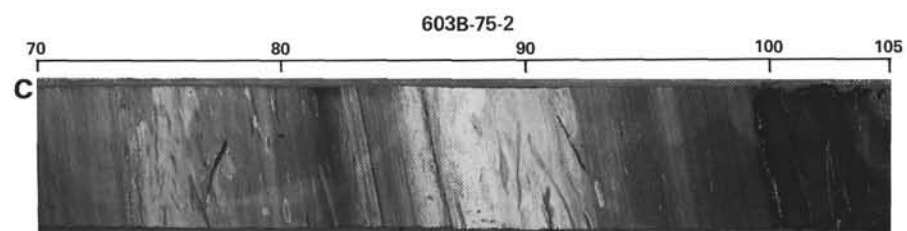
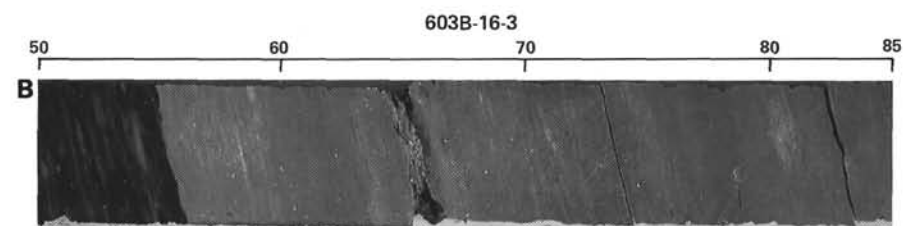
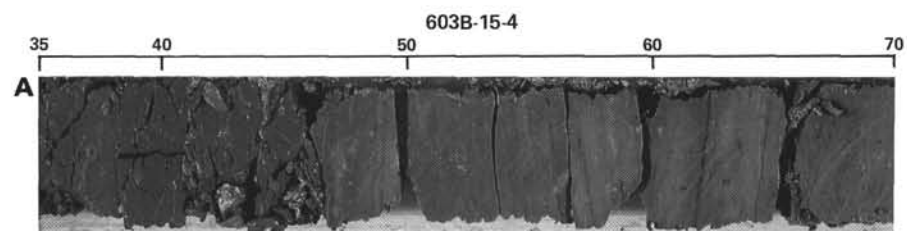
E. 604-26-1, 40–70 cm. Lithologic Unit II of Site 604 consists of greenish gray, biogenic-silica-bearing clay to claystone (40–60 cm) with glauconite-rich sand intervals (60–70 cm).

604-26-2, 40–70 cm. Drilling at Site 604 was terminated in lithologic Unit III, a middle upper Miocene debris-flow deposit that was not penetrable by rotary drilling. The Unit II/III contact is seen in Section 604-26-2 at 46 cm, separating Unit II claystones with glauconite-rich sand intervals from the underlying glauconite-rich and biogenic-silica-rich silty claystones and conglomerates. An erosive contact at the base of a conglomerate is seen at 66 cm.

604-26-3, 40–70 cm. Conglomerate of lithologic Unit III, Site 604, with clasts of brown silica-rich claystones, pale greenish yellow clay-rich, biogenic-silica-rich nannofossil chalk, grayish green limestone, and rounded quartz pebbles in a matrix of clayey sandy siltstone.

Site 605, Upper Continental Rise

F. The contact between lithologic Units I and II of Site 605 occurs between 605-6-4, 149 cm, and 605,CC and marks an unconformity between Pleistocene green, biogenic-silica-bearing, calcareous-rich stiff clay to claystone, and middle Eocene greenish gray, biogenic-silica-rich nannofossil chalk. This contact also represents seismic reflection Horizon A.



Initial Reports of the Deep Sea Drilling Project

A Project Planned by and Carried Out With the Advice of the
JOINT OCEANOGRAPHIC INSTITUTIONS FOR DEEP EARTH SAMPLING (JOIDES)

VOLUME XCIII, Part 1

covering Leg 93 of the cruises of the Drilling Vessel *Glomar Challenger*
Norfolk, Virginia, to Norfolk, Virginia
May-June, 1983

PARTICIPATING SCIENTISTS

Jan E. van Hinte, Sherwood W. Wise, Jr., Brian N. M. Biart, J. Mitchener Covington,
Dean A. Dunn, Janet A. Haggerty, Mark W. Johns, Philip A. Meyers,
Michel R. Moullade, Jay P. Muza, James G. Ogg,
Makoto Okamura, Massimo Sarti, and Ulrich von Rad

SHIPBOARD SCIENCE REPRESENTATIVE

Dean A. Dunn

EDITORS

Jan H. Blakeslee
Elizabeth Whalen

Prepared for the
NATIONAL SCIENCE FOUNDATION
National Ocean Sediment Coring Program
Under Contract C-482

By the
UNIVERSITY OF CALIFORNIA
Scripps Institution of Oceanography
Prime Contractor for the Project

This material is based upon research supported by the National Science Foundation under Contract No. C-482.

Any opinions, findings, and conclusions or recommendations expressed in this publication are those of the author(s) and do not necessarily reflect the views of the National Science Foundation.

It is recommended that reference to the whole or to part of this volume be made in one of the following forms, as appropriate:

van Hinte, J. E., Wise, S. W., Jr., et al., 19___. *Init. Repts. DSDP*, 93: Washington (U.S. Govt. Printing Office).

Hulsbos, R. E., 19___. Eocene benthic foraminifers from the upper continental rise off New Jersey, Deep Sea Drilling Project Site 605. *In* van Hinte, J. E., Wise, S. W., Jr., et al., *Init. Repts. DSDP*, 93, Pt. 2: Washington (U.S. Govt. Printing Office), ___-___.

Effective Publication Dates of DSDP *Initial Reports*

According to the International Code of Zoological Nomenclature, the date of publication of a work and of a contained name or statement affecting nomenclature is the date on which the publication was mailed to subscribers, placed on sale, or when the whole edition is distributed free of charge, mailed to institutions and individuals to whom free copies are distributed. The mailing date, *not the printed date*, is the correct one.

Mailing dates of the more recent *Initial Reports of the Deep Sea Drilling Project* are as follows:

Mailing dates:	Volume 87—February, 1986
	Volume 89—September, 1986
	Volume 90—January, 1986
	Volume 92—November, 1986
	Volume 96—October, 1986

Printed May 1987

Library of Congress Catalog Card Number 74—603338

For sale by the Superintendent of Documents, U.S. Government Printing Office
Washington, D.C. 20402

Stock number 038-000-00575-8

Foreword

The world's first major oceanographic expedition took place between 1872 and 1876. This expedition, aboard the H.M.S. *Challenger* covering nearly 70,000 nautical miles and gathering oceanographic data from 362 stations, expanded our knowledge of the ocean and provided a solid foundation for future studies in marine geology. A century later, another vessel also named *Challenger* continued to expand our knowledge of the world's ocean and helped revolutionize our concepts of how the seafloor and the continents form and change. The drilling vessel *Glomar Challenger* sailed the same waters as its historic counterpart, seeking answers to new questions concerning the history of our planet and the life it supports. The continued advancement of knowledge about the fundamental processes and dynamics of the earth is leading to a greater understanding of our planet and more intelligent use of its resources.

Since 1968, the Deep Sea Drilling Project (DSDP) has been supported by the National Science Foundation, primarily through a contract with the University of California which, in turn, subcontracted to Global Marine Incorporated for the services of the D/V *Glomar Challenger*.

Through contracts with Joint Oceanographic Institutions, Inc. (JOI, Inc.), the National Science Foundation supported the scientific advisory structure for the project and funded predrilling geophysical site surveys. Scientific planning was conducted under the auspices of the Joint Oceanographic Institutions for Deep Earth Sampling (JOIDES). The JOIDES advisory group consisted of over 250 members who made up 24 committees, panels, and working groups. The members were distinguished scientists from academic institutions, government agencies, and private industry all over the world.

In 1975, the International Phase of Ocean Drilling (IPOD) began. The IPOD member nations, Federal Republic of Germany, Japan, United Kingdom, Soviet Union, and France, partially supported the project. Each member nation actively participated in the scientific planning of the project through membership in JOIDES. Scientists from these countries also took part in the field work aboard the D/V *Glomar Challenger* and postcruise scientific studies.

The first ocean coring operations for the Deep Sea Drilling Project began on August 11, 1968. During the ensuing years of drilling operations in the Atlantic, Pacific, and Indian oceans, the Gulf of Mexico, Caribbean Sea, Mediterranean Sea, and Antarctic waters, the scientific objectives that had been proposed were successfully accomplished. Primarily, the age of the ocean basins and their processes of development were determined. The validity of the hypothesis of sea-floor spreading was firmly demonstrated and its dynamics studied. Emphasis was placed on broad reconnaissance and testing the involvement of mid-oceanic ridge systems in the development of the ocean basin. Later legs of the *Challenger's* voyages concentrated on the nature of the oceanic crust, the sedimentary history of the passive ocean margins, sediment dynamics along active ocean margins, and other areas of interest. The accumulated results of this project have led to major new interpretations of the pattern of sedimentation and the physical and chemical characteristics of the ancient oceans.

Technological advances have provided new tools which in turn have opened new dimensions of scientific discovery. The introduction of the Hydraulic Piston Corer in 1979 permitted virtually undisturbed cores of soft sediment layers to be obtained. This technological advance has greatly enhanced the ability of scientists to study ancient ocean environments, as recorded by sediment characteristics and flora and fauna preserved in these deposits.

A second major advance has been the use of the hole after drilling. The project routinely log-

ged holes and performed geophysical and geochemical studies before, during, and after drilling. Long-term downhole geophysical seismic monitoring devices have been implanted successfully in DSDP holes. These new listening devices and geophysical studies have provided valuable information about the origin and nature of the dynamic processes of plate tectonics.

These reports contain the results of the initial studies of the recovered core material and the associated geophysical information. All the world's people benefit either directly or indirectly from this fundamental research. Knowledge about past and present conditions and processes are the foundations for future predictions and developments. Both short- and long-term benefits are obtained by advances in drilling technology and instrumentation. Information is being obtained about the origin and geographic distribution of natural resources. Just as the H.M.S. *Challenger* had a profound impact on scientific thought for over a century, this second *Challenger* expedition has given a greater understanding of the oceans and the processes that form and shape the earth.



Erich Bloch,
Director

Washington, D.C.

Preface

Recognizing the need in the oceanographic community for scientific planning of a program to obtain deep sedimentary cores from the ocean bottoms, four of the major oceanographic institutions that had strong interests and programs in the fields of marine geology and geophysics formed, in May 1964, the Joint Oceanographic Institutions for Deep Earth Sampling (JOIDES). This group, Lamont-Doherty Geological Observatory; Rosenstiel School of Marine and Atmospheric Science, University of Miami; the Scripps Institution of Oceanography, University of California at San Diego; and the Woods Hole Oceanographic Institution, expressed an interest in undertaking scientific planning and guidance of the sedimentary drilling program. It was the purpose of this group to foster programs to investigate the sediments and rocks beneath the deep oceans by drilling and coring. The membership of this original group was later enlarged in 1968 when the University of Washington became a member, and again in 1975 when University of Hawaii Institute of Geophysics, the Oregon State University School of Oceanography, the University of Rhode Island Graduate School of Oceanography, and Texas A&M University Department of Oceanography became members. In accordance with international agreements, institutions of participating nations became members of JOIDES. Thus, during 1974 to 1976, the Bundesanstalt für Geowissenschaften und Rohstoffe of the Federal Republic of Germany, the Centre National pour l'Exploitation des Océans of France, the Natural Environment Research Council of the United Kingdom, the University of Tokyo of Japan, and Academy of Sciences of the USSR became JOIDES members.

Through discussions sponsored by the JOIDES organization, with support from the National Science Foundation, Columbia University's Lamont-Doherty Geological Observatory operated a drilling program in the summer of 1965, on the Blake Plateau region off Jacksonville, Florida.

With this success in hand, planning began for a more extensive deep sea effort. This resulted in the award of a contract by the National Science Foundation to the Scripps Institution of Oceanography, University of California at San Diego for an eighteen-month drilling program in the Atlantic and Pacific oceans, termed the Deep Sea Drilling Project (DSDP). Operations at sea began in August 1968, using the now-famous drilling vessel, the *Glomar Challenger*.

The goal of the Deep Sea Drilling Project is to gather scientific information that will help determine the age and processes of development of the ocean basins. The primary strategy is to drill deep holes into the ocean floor, relying largely on technology developed by the petroleum industry.

Through the efforts of the principal organizations and of the panel members, who were drawn from a large cross section of leading earth scientists and associates, a scientific program was developed.

Cores recovered from deep beneath the ocean floor provide reference material for a multitude of studies in fields such as biostratigraphy, physical stratigraphy, and paleomagnetism that afford a new scope for investigating the physical and chemical aspects of sediment provenance, transportation, deposition, and diagenesis. In-hole measurements, as feasible, provide petrophysical data to permit inference of lithology of intervals from which no cores were recovered.

A report, describing the core materials and information obtained both at sea and in laboratories onshore, is published after the completion of each cruise. These reports are a cooperative effort of shipboard and shore-based scientists and are intended primarily to be a compilation of results which, it is hoped, will be the starting point for many future new and exciting research programs. Preliminary interpretations of the data and observations taken at sea are also included.

Core materials and data collected on each cruise will be made available to qualified scientists through the Curator of the Deep Sea Drill-

ing Project, following a Sample Distribution Policy (p. xix) approved by the National Science Foundation.

The advent of *Glomar Challenger*, with its deep-water drilling capability, is exceedingly timely. It has come when geophysical investigation of the oceans has matured through 20 to 30 years of vigorous growth to the point where we have some knowledge about much of the formerly unknown oceanic areas of our planet. About one million miles of traverses have been made which tell us much about the global pattern of gravity, magnetic and thermal anomalies, and about the composition, thickness, and stratigraphy of the sedimentary cover of the deep sea and continental margin. The coverage with such data has enabled the site selection panels to pick choice locations for drilling. The knowledge gained from each hole can be extended into the surrounding area. Detailed geophysical surveys were made for most of the selected locations prior to drilling.

The earth sciences have recently matured from an empirical status to one in which substantial theories and hypotheses about major tectonic processes are flourishing. Theories about the origin of magnetic fields and magnetic reversals, about ocean floor spreading and continental drift, and about the thermal history of our planet have led to specific predictions that could be tested best by an enlightened program of sampling of deep sea and continental margin sediments and underlying rocks.

In October 1975, the International Phase of Ocean Drilling (IPOD) began. This international interest, and the true participation of both the scientists and governments of a number of nations, are eloquent testimony to the importance of the work being done by the Deep Sea Drilling Project.

The members of JOIDES and DSDP and the scientists from all interested organizations and nations who have served on the various advisory panels are proud to have been of service and believe that the information and core materials that have been obtained will be of value to students of earth sciences and to all humanity for many years to come.

Deep Sea Drilling Project

MEMBER ORGANIZATIONS OF THE JOINT OCEANOGRAPHIC INSTITUTIONS FOR DEEP EARTH SAMPLING (JOIDES):¹

Bundesanstalt für Geowissenschaften und Rohstoffe,
Federal Republic of Germany

University of California at San Diego,
Scripps Institution of Oceanography

Centre National pour l'Exploitation des Océans, Paris

Columbia University, Lamont-Doherty Geological
Observatory

University of Hawaii, Hawaii Institute of Geophysics

University of Miami, Rosenstiel School of Marine and
Atmospheric Science

Natural Environment Research Council, London

Oregon State University, School of Oceanography

University of Rhode Island, Graduate School of
Oceanography

Texas A&M University, Department of Oceanography

University of Tokyo, Ocean Research Institute

University of Washington, Department of
Oceanography

U.S.S.R. Academy of Sciences²

Woods Hole Oceanographic Institution

University of Texas at Austin

OPERATING INSTITUTION:

Scripps Institution of Oceanography
University of California at San Diego
La Jolla, California
W. A. Nierenberg, Director

DEEP SEA DRILLING PROJECT

Dr. M. N. A. Peterson
Principal Investigator
Project Manager

Mr. Robert S. Bower
Assistant Project Manager for
Administration and Contracts

Dr. Yves Lancelot
Chief Scientist

Mr. Ed Dean
Finance Administrator

Ms. Sue Strain
Personnel Officer

¹ Includes member organizations during time of cruise.

² This institution and its committee and panel members were noncontributing members of JOIDES at time of cruise.

Participants aboard GLOMAR CHALLENGER for Leg Ninety-three

Dr. Jan E. van Hinte
Co-Chief Scientist
*Instituut voor Aardwetenschappen
Vrije Universiteit
1007 MC Amsterdam
The Netherlands*

Dr. Sherwood W. Wise, Jr.
Co-Chief Scientist
*Department of Geology
Florida State University
Tallahassee, Florida 32306*

Mr. Brian N. M. Biart
Physical Properties Specialist
*Department of Earth Sciences
Open University
Milton Keynes MK7 6AA
United Kingdom*

Mr. J. Mitchener Covington
Paleontologist (nannofossils)
*Department of Geology
Florida State University
Tallahassee, Florida 32306*

Dr. Dean A. Dunn
Sedimentologist/Staff Science Representative
*Department of Geology
University of Southern Mississippi
Hattiesburg, Mississippi 39406*

Dr. Janet A. Haggerty
Sedimentologist
*Department of Geosciences
University of Tulsa
Tulsa, Oklahoma 74104*

Mr. Mark W. Johns
Physical Properties Specialist
*Department of Oceanography
Texas A&M University
College Station, Texas 77843*

Dr. Philip A. Meyers
Organic Geochemist
*Department of Atmospheric and Oceanic Science
University of Michigan
Ann Arbor, Michigan 48109*

Dr. Michel R. Moullade
Paleontologist (foraminifers)
*Centre de Recherches Micropaléontologiques
Université de Nice
06034 Nice, Cedex
France*

Mr. Jay P. Muza
Sedimentologist
*Department of Geology
Florida State University
Tallahassee, Florida 32306*

Dr. James G. Ogg
Sedimentologist/Paleomagnetist
*Department of Geology and Geophysics
University of Wyoming
Laramie, Wyoming 82071*

Dr. Makoto Okamura
Paleontologist (radiolarians)
*Department of Geology
Kochi University
Kochi City, Kochi Prefecture 780
Japan*

Dr. Massimo Sarti
Sedimentologist
*Istituto di Geologia
Università di Ferrara
44100 Ferrara
Italy*

Dr. Ulrich von Rad
Sedimentologist
*Bundesanstalt für Geowissenschaften und Rohstoffe
3 Hannover 51
Federal Republic of Germany*

Mr. Glen Foss
Cruise Operations Manager
*Deep Sea Drilling Project
Scripps Institution of Oceanography
La Jolla, California 92093*

Mr. Robert Connolly
Weatherman
*Deep Sea Drilling Project
Scripps Institution of Oceanography
La Jolla, California 92093*

Captain Sydney M. Shuman
Master of the Drilling Vessel
Global Marine Drilling Co.
San Diego, California 92111

Mr. A. C. Wheeler, Jr.
Drilling Superintendent
Global Marine Drilling Co.
San Diego, California 92111

Mr. Michael Lehman
Laboratory Officer
Deep Sea Drilling Project
Scripps Institution of Oceanography
La Jolla, California 92093

Mr. Bradley de Flon Julson
Chemist
Deep Sea Drilling Project
Scripps Institution of Oceanography
La Jolla, California 92093

Mr. Robert Hayman
Curatorial Representative
Deep Sea Drilling Project
Scripps Institution of Oceanography
La Jolla, California 92093

Mr. W. Thomas Birtley
Software Engineer
Deep Sea Drilling Project
Scripps Institution of Oceanography
La Jolla, California 92093

Mr. Peter Woodbury
Software Engineer
Deep Sea Drilling Project
Scripps Institution of Oceanography
La Jolla, California 92093

Mr. Dennis K. Graham
System Manager
Deep Sea Drilling Project
Scripps Institution of Oceanography
La Jolla, California 92093

Mr. Paul Laughlin
Electronics Technician
Deep Sea Drilling Project
Scripps Institution of Oceanography
La Jolla, California 92093

Mr. Frank Sanchez, Jr.
Electronics Technician
Deep Sea Drilling Project
Scripps Institution of Oceanography
La Jolla, California 92093

Mr. Leonard Lopez
Marine Technician
Deep Sea Drilling Project
Scripps Institution of Oceanography
La Jolla, California 92093

Mr. Donald F. Marsee
Marine Technician
Deep Sea Drilling Project
Scripps Institution of Oceanography
La Jolla, California 92093

Mr. Blair McKay
Marine Technician
Deep Sea Drilling Project
Scripps Institution of Oceanography
La Jolla, California 92093

Mr. Ed Slater
Marine Technician
Deep Sea Drilling Project
Scripps Institution of Oceanography
La Jolla, California 92093

Mr. Kevin S. Reid
Photographer
Deep Sea Drilling Project
Scripps Institution of Oceanography
La Jolla, California 92093

Ms. Louise Henry
Yeoperson
Deep Sea Drilling Project
Scripps Institution of Oceanography
La Jolla, California 92093

Deep Sea Drilling Project Publications Staff

Publications Manager

Jan H. Blakeslee

Production Manager

Mary A. Young

Art-Photo Supervisor

Virginia L. Roman

Editors

Susan Orlofsky

Katie L. Turner

Production Coordinator

Carolina Bertling

Illustrators

Aileen Bobryk (this volume)

Vicki Cypherd (this volume)

Kathleen Sanderson (this volume)

JOIDES Advisory Groups¹

Executive Committee

Dr. D. James Baker, Jr.
University of Washington

Prof. Dr. Friedrich Bender
Bundesanstalt für Geowissenschaften und Rohstoffe

Dr. Alan Berman, Chairman
Rosenstiel School of Marine and Atmospheric Science

Dr. Bernard Biju-Duval
Centre National pour l'Exploitation des Océans

Dr. John C. Bowman
Natural Environment Research Council

Dr. G. Ross Heath
Oregon State University

Dr. Charles E. Helsley
Hawaii Institute of Geophysics

Dr. Jose Honnorez (ex-officio
Planning Committee Representative)
Rosenstiel School of Marine and Atmospheric Science

Dr. John A. Knauss
University of Rhode Island

Dr. Arthur Maxwell
University of Texas at Austin

Dr. Noriyuki Nasu
University of Tokyo

Dr. William A. Nierenberg
Scripps Institution of Oceanography

Dr. Melvin N. A. Peterson (ex-officio)
Scripps Institution of Oceanography

Dr. Barry Raleigh
Lamont-Doherty Geological Observatory

Dr. Robert D. Reid
Texas A&M University

Dr. Alexander V. Sidorenko
U.S.S.R. Academy of Sciences

Dr. John Steele
Woods Hole Oceanographic Institution

Planning Committee

Dr. Jean Aubouin
Université Pierre et Marie Curie

Dr. Helmut Beiersdorf
Bundesanstalt für Geowissenschaften und Rohstoffe

Dr. William R. Bryant
Texas A&M University

Dr. Richard T. Buffler
University of Texas at Austin

Dr. Joe R. Cann
University of Newcastle-upon-Tyne

Dr. Joe S. Creager
University of Washington

Dr. Dennis E. Hayes
Lamont-Doherty Geological Observatory

Dr. Jose Honnorez, Chairman
Rosenstiel School of Marine and Atmospheric Science

Dr. James P. Kennett
University of Rhode Island

Dr. Kazuo Kobayashi
University of Tokyo

Dr. Yves Lancelot (ex-officio)
Scripps Institution of Oceanography

Dr. Ralph Moberly
Hawaii Institute of Geophysics

Dr. Lev Nikitin
U.S.S.R. Academy of Sciences

Dr. Hans Schrader
Oregon State University

Dr. Richard P. Von Herzen
Woods Hole Oceanographic Institution

Dr. Edward L. Winterer
Scripps Institution of Oceanography

Advisory Panel on Sedimentary Petrology and Physical Properties

Dr. Richard Bennett
National Oceanic and Atmospheric Administration

Mr. Robert E. Boyce (ex-officio)
Scripps Institution of Oceanography

Dr. Richard Carlson
Texas A&M University

Dr. Walter E. Dean, Jr.
U.S. Geological Survey

Dr. George deVries Klein, Chairman
University of Illinois, Urbana

Dr. Leland Kraft
McClelland Engineers, Inc.

Dr. Michael T. Ledbetter
University of Georgia, Athens

Dr. I. Nick McCave
University of East Anglia

Dr. Frédéric Mélières
Université Pierre et Marie Curie

Dr. Ralph Moberly (ex-officio)
Hawaii Institute of Geophysics

Dr. Gregory Mountain
Lamont-Doherty Geological Observatory

¹ Membership at time of cruise.

Dr. Peter Rothe
Universität Mannheim

Dr. Peter P. Timofeev
U.S.S.R. Academy of Sciences

Advisory Panel on Organic Geochemistry

Dr. Earl W. Baker
Florida Atlantic University

Dr. Miriam Baltuck (ex-officio)
Scripps Institution of Oceanography

Dr. Simon C. Brassell
University of Bristol

Dr. Egon T. Degens
Universität Hamburg

Dr. Eric Galimov
U.S.S.R. Academy of Sciences

Dr. John M. Hunt
Woods Hole Oceanographic Institution

Dr. Keith A. Kvenvolden
U.S. Geological Survey

Dr. Philip A. Meyers
University of Michigan

Dr. Hans Schrader (ex-officio)
Oregon State University

Dr. Bernd R. T. Simoneit, Chairman
Oregon State University

Advisory Panel on Information Handling

Dr. Daniel E. Appleman, Chairman
Smithsonian Institution

Dr. Joe S. Creager (ex-officio)
University of Washington

Dr. John C. Hathaway
U.S. Geological Survey

Dr. Alfred Loeblich, Jr.
University of California, Los Angeles

Dr. Michael S. Loughridge
National Oceanic and Atmospheric Administration

Dr. Marthe Melguen
Bureau National des Données Océaniques (CNEXO)

Dr. Russell Merrill (ex-officio)
Scripps Institution of Oceanography

Mrs. Judit Nowak
Bundesanstalt für Geowissenschaften und Rohstoffe

Dr. John B. Saunders
Naturhistorisches Museum Basel

Dr. Valery V. Zdorovenin
U.S.S.R. Academy of Sciences

Industrial Liaison Panel

Mr. R. L. Adams
Conoco Inc.

Prof. Nikolai P. Budnikov
Ministry of Geology of the U.S.S.R.

Mr. Melvin J. Hill
Gulf Oil Exploration and Production Company

Dr. Ing. Guenter Peterson
Gewerkschaft Walter

Mr. W. A. Roberts, Chairman
Energy Concepts, Inc.

Dr. Gilbert Rutman
Société Nationale des Pétroles d'Aquitaine

Mr. G. Williams
United Kingdom Offshore Operators Association, Ltd.

Advisory Panel on Ocean Crust

Dr. Roger N. Anderson
Lamont-Doherty Geological Observatory

Dr. Henri Bougault
Centre Océanologique de Bretagne (CNEXO)

Dr. John R. Delaney
University of Washington

Dr. Donald Elthon
University of Houston

Prof. Dr. Rolf Emmermann
Universität Giessen

Dr. Kenneth C. MacDonald
University of California, Santa Barbara

Dr. Ralph Moberly (ex-officio)
Hawaii Institute of Geophysics

Dr. James Natland (ex-officio)
Scripps Institution of Oceanography

Dr. Minoru Ozima
University of Tokyo

Dr. Paul Robinson, Chairman
Dalhousie University

Dr. Hans Schouten
Woods Hole Oceanographic Institution

Dr. Ralph Stephen
Woods Hole Oceanographic Institution

Dr. John Tarney
University of Leicester

Dr. Andrei A. Tsvetkov
U.S.S.R. Academy of Sciences

Advisory Panel on Ocean Margin (Active)

Dr. Peter F. Barker
University of Birmingham

Dr. Jean-Paul Cadet
Université d'Orléans

Dr. William Coulbourn (ex-officio)
Scripps Institution of Oceanography

Dr. Darrell Cowan
University of Washington

Dr. Joe S. Creager (ex-officio)
University of Washington

Dr. Yury I. Dmitriev
U.S.S.R. Academy of Sciences

Dr. Dennis E. Hayes (ex-officio)
Lamont-Doherty Geological Observatory

Dr. Donald M. Hussong, Chairman
Hawaii Institute of Geophysics

Dr. Daniel Karig
Cornell University

Dr. John W. Ladd
Lamont-Doherty Geological Observatory

Dr. Kazuaki Nakamura
University of Tokyo

Dr. Roland von Huene
U.S. Geological Survey

Dr. Hansjost Walther
Bundesanstalt für Geowissenschaften und Rohstoffe

Advisory Panel on Ocean Margin (Passive)

Dr. Mikhail E. Artemiev
U.S.S.R. Academy of Sciences

Dr. Arnold H. Bouma
Gulf Research and Development Company

Dr. William R. Bryant (ex-officio)
Texas A&M University

Dr. Karl Hinz
Bundesanstalt für Geowissenschaften und Rohstoffe

Dr. Hideo Kagami
University of Tokyo

Dr. Charlotte Keene
Geological Survey of Canada

Dr. Yves Lancelot (ex-officio)
Scripps Institution of Oceanography

Dr. Lucien Montadert
Institut Français du Pétrole

Dr. David G. Roberts, Chairman
British Petroleum Co., Ltd.

Dr. William B. F. Ryan
Lamont-Doherty Geological Observatory

Dr. Sigmund Snelson
Shell Oil Company

Dr. Jørn Thiede
Universitetet i Oslo

Dr. Brian E. Tucholke
Woods Hole Oceanographic Institution

Dr. Peter R. Vail
Exxon Production Company

Dr. Jan E. van Hinte
Vrije Universiteit

Dr. Edward L. Winterer (ex-officio)
Scripps Institution of Oceanography

Advisory Panel on Pollution Prevention and Safety

Dr. Nikolai I. Belyi
Ministry of Gas Industry, U.S.S.R.

Dr. Rustum Jean Byramjee
Compagnie Française des Pétroles

Dr. George Claypool
U.S. Geological Survey

Dr. Louis E. Garrison, Chairman
U.S. Geological Survey

Dr. Arthur E. Green
Exxon Production Research Laboratory

Dr. Jose Honnorez (ex-officio)
Rosenstiel School of Marine and Atmospheric Science

Prof. A. J. Horn
Atherton, California

Dr. Ernst Hotz
Deminex, Essen, Federal Republic of Germany

Dr. Yves Lancelot (ex-officio)
Scripps Institution of Oceanography

Dr. David B. MacKenzie
Marathon Oil Company

Dr. Geoffrey D. Taylor
British Petroleum Co., Ltd.

Advisory Panel on Inorganic Geochemistry

Dr. Miriam Baltuck (ex-officio)
Scripps Institution of Oceanography

Dr. Stephen E. Calvert
University of British Columbia

Dr. Joe R. Cann (ex-officio)
University of Newcastle-upon-Tyne

Dr. Henry Elderfield
University of Leeds

Dr. Michel Hoffert
Université de Bretagne Occidentale

Dr. Miriam Kastner, Chairman
Scripps Institution of Oceanography

Dr. Margaret Leinen
University of Rhode Island

Dr. Igor D. Ryabchikov
U.S.S.R. Academy of Sciences

Dr. Sam Savin
Case Western Reserve University

Dr. Fred L. Sayles
Woods Hole Oceanographic Institution

Dr. Hubert Staudigel
Lamont-Doherty Geological Observatory

Dr. Karl-Heinz Wedepohl
Universität Göttingen

Stratigraphic Correlations Panel

Dr. Ivan Basov
U.S.S.R. Academy of Sciences

Dr. Lloyd H. Burckle
Lamont-Doherty Geological Observatory

Dr. James P. Kennett (ex-officio)
University of Rhode Island

Prof. Dr. Erlend Martini
Universität Frankfurt

Dr. Catherine Nigrini
La Habra Heights, California
Dr. Richard Z. Poore, Chairman
U.S. Geological Survey
Dr. Ellen Thomas (ex-officio)
Scripps Institution of Oceanography

Downhole Measurements Panel

Dr. Keir Becker (ex-officio)
Scripps Institution of Oceanography
Dr. William Bryant (ex-officio)
Texas A&M University
Dr. Nikolas I. Christensen
University of Washington
Dr. Timothy J. G. Francis
Natural Environment Research Council
Dr. Roy Hyndman
*Department of Energy, Mines and Resources,
British Columbia*
Mr. Alfred H. Jageler
Amoco Production Research Company
Dr. Reinhard Jung
Bundesanstalt für Geowissenschaften und Rohstoffe
Dr. Hajimu Kinoshita
Chiba University
Dr. Mark Mathews
Los Alamos National Laboratory
Dr. Yury Neprochnov
U.S.S.R. Academy of Sciences
Dr. Lev Nikitin (ex-officio)
U.S.S.R. Academy of Sciences
Dr. Vincent Renard
Centre National pour l'Exploitation des Océans
Dr. Richard P. Von Herzen, Chairman
Woods Hole Oceanographic Institution

Advisory Panel on Ocean Paleoenvironment

Dr. Michael Arthur, Chairman
University of South Carolina, Columbia
Dr. Helmut Beiersdorf (ex-officio)
Bundesanstalt für Geowissenschaften und Rohstoffe
Dr. Hervé Chamley
Université des Sciences et Techniques de Lille
Dr. Robert G. Douglas
University of Southern California

Dr. Dieter Fütterer
Universität Kiel
Dr. Robert E. Garrison
University of California, Santa Cruz
Dr. James D. Hays
Lamont-Doherty Geological Observatory
Dr. James P. Kennett (ex-officio)
University of Rhode Island
Dr. Robert B. Kidd
Natural Environment Research Council
Dr. Theodore C. Moore, Jr.
Exxon Production Research Company
Dr. Seymour O. Schlanger
Northwestern University
Dr. Yokichi Takayanagi
Tohoku University
Dr. Fritz Theyer
Hawaii Institute of Geophysics
Dr. Ellen Thomas (ex-officio)
Scripps Institution of Oceanography
Dr. Peter P. Timofeev
U.S.S.R. Academy of Sciences

Advisory Panel on Site Surveying

Dr. Helmut Beiersdorf (ex-officio)
Bundesanstalt für Geowissenschaften und Rohstoffe
Mr. Carl Brenner (ex-officio)
Lamont-Doherty Geological Observatory
Dr. Fred Duennebier
Hawaii Institute of Geophysics
Dr. Dennis Hayes (ex-officio)
Lamont-Doherty Geological Observatory
Dr. E. John W. Jones, Chairman
University College of London
Dr. Shozaburo Nagumo
University of Tokyo
Dr. Vincent Renard
Centre National pour l'Exploitation des Océans
Dr. Matthew Salisbury (ex-officio)
Scripps Institution of Oceanography
Dr. Alexander A. Schreider
U.S.S.R. Academy of Sciences
Dr. Wilfried Weigel
Universität Hamburg

SAMPLE DISTRIBUTION POLICY *

Distribution of Ocean Drilling Program and of Deep Sea Drilling Project samples is undertaken in order to (1) provide support to shipboard scientists in achieving the scientific objectives of their cruise, and support shorebased investigators who are preparing contributions to DSDP and ODP reports; (2) provide individual investigators with materials to conduct detailed studies beyond the scope of ODP reports; (3) provide paleontological reference centers with samples for reference and comparison purposes; and (4) provide educators with samples for teaching purposes.

Funding for sample-related activities must be secured by the investigator independently of requesting the samples.

The Ocean Drilling Program Curator is responsible for distributing samples and for preserving and conserving core material. The Curator, who may accept advice from chairmen of the appropriate JOIDES advisory panels, is responsible for enforcing the provisions of this sample distribution policy. He is responsible for maintaining a record of all samples that have been distributed, both onboard ship and subsequently from the repositories, indicating the recipients and the nature of investigations proposed. This information is available to interested investigators on request.

Every sample distributed from the ship or from a repository is labeled with a standard identifier, which includes leg number, hole number, core and section numbers, and interval within the section from which the sample was removed. It is imperative that this standard identifier be associated with all data reported in the literature, and that residues of the sample remain labeled throughout their lives, so that later workers can relate the data to the cores.

Distribution of sample materials is made directly from the repositories (Lamont-Doherty Geological Observatory, Scripps Institution of Oceanography, or Texas A&M University) by the Curator or his designated representative.

1. *Distribution of Samples for Research Leading to Contributions to ODP Reports*

Any investigator who wishes to contribute to the reports of a scheduled cruise may write to the Curator, Ocean Drilling Program, Texas A&M University, College Station, Texas 77843-3469, U.S.A., in order to request samples from that cruise. Requests for a specific cruise must be received by the Curator at least

TWO MONTHS in advance of the departure of that cruise, in order to allow time for the review of the request in conjunction with other requests, so that a suitable shipboard sampling program can be assembled. The request should include a statement of the nature of the proposed research, size and approximate number of samples required to complete the study, and any particular sampling technique or equipment which may be required. Requests will be reviewed by the staff representative and co-chief scientists of the cruise and by the Curator. Approval/disapproval will be based upon the scientific requirements of the cruise as determined by the appropriate JOIDES advisory panel(s). The scope of a request must be such that samples can be processed, that proposed research can be completed, and that the paper can be written in time for submission to the relevant ODP cruise report.

Except for rare, specific instances involving ephemeral properties, the total volume of samples removed during a cruise-related sampling program will not exceed one-quarter of the volume of core recovered, and no interval will be depleted. One-half of all recovered materials will be retained in the archives in as pristine a condition as is practicable. Investigators requesting shipboard samples of igneous materials may receive a maximum of 100 igneous samples per cruise.

Because many sample requests are received for shipboard work and because the time of the shipboard party is at a premium, co-chief scientists are strongly urged to limit shipboard sampling to the minimum necessary to accomplish the cruise objectives. Shore-based investigators whose requests for cruise-related samples are approved should expect that they will receive the samples after the cores are returned to the repository, and should schedule research activities accordingly.

Co-chief scientists may invite investigators who are not cruise participants to perform special studies of selected core samples in direct support of shipboard activities. If this occurs, the names and addresses of these investigators and details of all samples loaned or distributed to them must be forwarded to the Curator, via the ODP Staff Representative to that cruise, immediately after the cruise. These investigators are expected to contribute to the cruise reports as though they had been cruise participants. All requirements of the Sample Distribution Policy apply.

Any publication of results other than in ODP reports within twelve (12) months of completion of the

*Revised October 1984

cruise must be approved and authored by the whole shipboard party and, where appropriate, shorebased investigators. After twelve months, individual investigators may submit related papers for open publication provided they have already submitted their contributions to ODP reports. Investigations which are not completed in time for inclusion in ODP reports for a specific cruise may be published in a later edition of ODP reports; however, they may not appear in another journal until the ODP report for which they were intended has been published.

2. Distribution of Samples for Research Leading to Publication Outside of the DSDP and ODP Reports

- A. Researchers who wish to use samples for studies beyond the scope of the DSDP or ODP reports should obtain sample request forms from the Curator, Ocean Drilling Program, Texas A&M University, College Station, Texas 77843-3469, U.S.A. Requestors are required to specify the quantities and intervals of core required, to make a clear statement of the nature of the proposed research, to state the time which will be required to complete the work and to submit results for publication, and to specify funding status and the availability of equipment and space for the research.

Additionally, if the requestor has received samples from ODP or from DSDP previously, he/she will be required to account for the disposition of those samples by citing published works, six (6) copies of which must be sent to the Curator. If no report has been published, this requirement can be fulfilled by sending a brief (two or three page) report of the status of the research. Unused and residual samples should be returned and data should be sent to the Curator if the project has terminated. Paleontological materials may be returned either to the Curator at ODP or to one of the designated paleontological reference centers. If material is returned to a reference center, notify the Curator when it is sent.

Requests for samples from researchers in industrial laboratories will be honored in the same manner as those from academic organizations. Industrial investigators have the same obligations as other investigators to publish all results promptly in the open literature and to provide the Curator with copies of all reports published and of all data acquired in their research.

In order to ensure that all requests for highly desirable but limited samples can be consid-

ered together, approval of requests and distribution of samples will be delayed until twelve (12) months after completion of the cruise or two (2) months after official publication of the core descriptions, whichever occurs earlier. The only exceptions to this policy will be made for specific requests involving ephemeral properties. Requests for samples may be based on core descriptions published in ODP reports produced by the shipboard party, copies of which are on file at various institutions throughout the world. Copies of original core logs and data are kept on open file at ODP, and at the repositories at Lamont-Doherty Geological Observatory and at Scripps Institution of Oceanography.

- B. Most investigations can be accomplished handily with sample volumes of 10 ml or less. Investigators must provide explicit justification of requests for larger sample sizes or for frequent intervals within a core. Requests which exceed reasonable size or frequency limits will require explicit justifications and more time to process, and are unlikely to be granted in their entirety.

Requests for samples from thin layers, from stratigraphically important boundaries, from sections which are badly depleted or in unusually high demand may be delayed in order to coordinate requests from several investigators or while the Curator seeks advice from the community. Investigators who submit such requests may expect to receive suggestions for alternative sampling programs or that they join a research consortium which will share the samples. In any event, such exceptional requests will require more time for processing than will more routine requests.

Investigators who wish to study ephemeral properties may request a waiver of the waiting period; however, such requests will be referred automatically to the relevant co-chiefs. If approved, the investigator will join the shore-based contributors to the shipboard science effort, and will incur the obligations thereof (see section 1).

- C. Samples will not be provided until the requestor assures the Curator that funding for the proposed research is available or unnecessary. If a sample request is dependent in any way upon proposed funding, the Curator is prepared to provide the proposed funding organization with information on the availability (or potential availability) of suitable samples.

D. Investigators who receive samples incur the following obligations:

(1) To publish significant results promptly; however, no contribution may be submitted for publication prior to twelve (12) months following the termination of the relevant leg unless it is approved and authored by the entire shipboard party.

(2) To acknowledge in all publications that the samples were supplied through the assistance of the international Ocean Drilling Program and others as appropriate.

(3) To submit six (6) copies of reprints of all published works to the Curator, Ocean Drilling Program, Texas A&M University, College Station, Texas 77843-3469, U.S.A. These reprints will be distributed to the repositories, to the ship, to the National Science Foundation, and to the Curator's reprint file.

(4) To submit all final analytical data obtained from the samples to Data Base Manager, Ocean Drilling Program, Texas A&M University, College Station, Texas 77843-3469, U.S.A. Please consult recent issues of the JOIDES Journal or call (409-845-2673) for information on acceptable data formats. Investigators should be aware that they may have other data obligations under NSF's Ocean Science Data Policy or under relevant policies of other funding agencies which require submission of data to national data centers.

(5) To return all unused or residual samples, in good condition and with a detailed explanation of any processing they may have experienced, upon termination of the proposed research. In particular, all thin sections and smear slides manufactured onboard the vessel or in the repositories are to be returned to the Curator. Paleontological materials may be returned either to the Curator at ODP or to one of the designated paleontological reference centers.

Failure to honor these obligations will prejudice future applications for samples.

E. Cores are available for examination by interested parties at the repositories. Investigators are welcome to visit the repositories in order to inspect cores and to specify sample locations when that is required for their research; however, time and space in the workrooms are limited, so advance appointments are required. Occasionally, the space may be fully booked several weeks in advance, so investigators are urged to call for appointments well ahead in

order to avoid disappointment. Only the Curator or his delegate may actually remove samples from the cores.

F. A reference library of thin sections, smear slides, and archive photographs is maintained in the repositories for the use of visiting investigators. All thin sections and smear slides produced onboard the ship or in the repositories belong to this library.

3. *Distribution of Samples to Paleontological Reference Centers*

As a separate and special category of repository activity, selected samples are being distributed to paleontological reference centers, where the prepared material may be studied by visitors. As of this writing (mid-1984), Foraminifera and Calcareous Nannofossils can be viewed; Radiolaria and Diatoms will be prepared in the future. The present centers are Scripps Institution of Oceanography, California (W. R. Riedel, tel. 619-452-4386); Basel Natural History Museum, Switzerland (J. B. Saunders, tel. 061-25.82.82); and New Zealand Geological Survey, Lower Hutt, New Zealand (A. R. Edwards, tel. 699.059). Future centers are likely to include Texas A&M University, College Station, Texas (S. Gartner, tel. 409-845-8479); Smithsonian Institution, Washington, D.C.; Lamont-Doherty Geological Observatory, Palisades, New York; and an as yet undesignated center in Japan.

Further details concerning the paleontological reference centers are reported periodically in the JOIDES Journal.

4. *Distribution of Samples for Educational Purposes*

Samples may be available in limited quantities to college-level educators for teaching purposes. Interested educators should request application forms from the Curator, Ocean Drilling Program, Texas A&M University, College Station, Texas 77843-3469, U.S.A. Requestors are required to specify preferred sample size and location, to make a very clear statement of the nature of the coursework in which the samples will be used, to explain how the core samples will be prepared and how they will be used in the classroom, to explain in detail why they cannot use similar materials derived from outcrops or dredge hauls (it is NOT acceptable to argue that it requires less effort for the requestor to obtain samples from ODP than to assemble them from other sources), and to certify that funds are available to prepare the materials for classroom use. In general, only samples of materials which are abundant in the collection and which are in little demand for research purposes should be requested for educational purposes. The Curator will not ap-

prove requests for materials which are limited in supply or for which demand (real or potential) is great, including most paleontological materials.

5. Distribution of Data

The Deep Sea Drilling Project and the Ocean Drilling Program routinely capture much of the data generated onboard ship and published in Program reports. Additionally, data supplied by investigators who have received samples are incorporated into the data bases, so data sets which are larger than can be published are available to investigators. Magnetics, downhole logging, seismic reflection, bathymetric data, and other data collected by the drilling vessel become available for distribution to investigators at the same time as core samples.

At least through mid-1986, DSDP data will continue to be distributed by the Data Base Manager, Deep Sea Drilling Project, A-031, University of California, San Diego, California 92093, U.S.A. A charge will be made to recover expenses in excess of \$50.00 incurred in filling individual requests. If required, estimates of charges can be furnished before the work is performed. As DSDP phases down, DSDP data will be available primarily from the National Geophysical Data Center, Boulder, Colorado.

Requests for ODP data should be addressed to the Data Base Manager, Ocean Drilling Program, Texas A&M University, College Station, Texas 77843-3469, U.S.A. Many varieties of DSDP data will be included in ODP data bases. Information on sources of DSDP data will be available from the ODP Data Base Manager.

CONTENTS

Chapter	Page	Chapter	Page
ACKNOWLEDGMENTS	1	APPENDICES	
PART I: INTRODUCTION		APPENDIX I. PHYSICAL PROPERTIES DATA, DEEP SEA DRILLING PROJECT LEG 93, SITES 603, 604, AND 605.....	445
1. EXPLANATORY NOTES, DEEP SEA DRILLING PROJECT LEG 93: LOWER AND UPPER CONTINENTAL RISE OFF EASTERN NORTH AMERICA.....	5	D. A. Dunn, B. N. M. Biart and M. W. Johns	
D. A. Dunn		APPENDIX II. ORGANIC CARBON AND CALCIUM CARBONATE ANALYSES, DEEP SEA DRILLING PROJECT LEG 93, NORTH AMERICAN CONTINENTAL RISE	465
PART II: SITE REPORTS		P. A. Meyers	
2. SITE 603	25		
Shipboard Scientific Party			
3. SITES 604 AND 605.....	277		
Shipboard Scientific Party			
PART III: PHYSICAL PROPERTIES			
4. CONSOLIDATION AND PERMEABILITY CHARACTERISTICS OF SEDIMENTS FROM DEEP SEA DRILLING PROJECT LEG 93, SITES 603 AND 604.....	417	BACK POCKET FOLDOUTS, PART 1	
M. W. Johns		CHAPTER 2: FIGURE 10. STRATIGRAPHIC SUMMARY DIAGRAM OF UNIT I, SITE 603, HOLES 603, 603B, AND 603C.	
5. PHYSICAL PROPERTIES MODELING AND SEISMIC STRATIGRAPHY AT DEEP SEA DRILLING PROJECT LEG 93 SITES IN THE WESTERN NORTH ATLANTIC.....	425	CHAPTER 3: FIGURE 30. REFLECTION STRATIGRAPHY OF SITES 603, 604, AND 605, U.S. ATLANTIC CONTINENTAL RISE .	
B. M. Biart			

CONTENTS

Chapter	Page	Chapter	Page
PART IV. PALEONTOLOGY			
A. FORAMINIFERS			
6. DISTRIBUTION OF LATE NEOGENE AND QUATERNARY BENTHIC FORAMINIFERS IN THE NORTHWEST ATLANTIC, DEEP SEA DRILLING PROJECT LEG 93, SITES 603 AND 604.....	473	12. PLANKTONIC FORAMINIFERS FROM THE CRETACEOUS/TERTIARY BOUNDARY AT DEEP SEA DRILLING PROJECT SITE 605, NORTH ATLANTIC.....	549
L. Blanc-Vernet and M. Moullade		J. Smit and T. M. G. van Kempen	
7. BIOSTRATIGRAPHIC AND PALEOENVIRONMENTAL STUDY OF NEOGENE AND QUATERNARY PLANKTONIC FORAMINIFERS FROM THE LOWER CONTINENTAL RISE OF THE NEW JERSEY MARGIN (WESTERN NORTH ATLANTIC), DEEP SEA DRILLING PROJECT LEG 93, SITE 603.....	481	13. MAESTRICHTIAN FORAMINIFERS FROM SITE 605, DEEP SEA DRILLING PROJECT LEG 93, NORTHWEST ATLANTIC	555
K. Ma'alouleh and M. Moullade		H. Jansen and D. Kroon	
8. DISTRIBUTION OF NEOGENE AND QUATERNARY PLANKTONIC FORAMINIFERS FROM THE UPPER CONTINENTAL RISE OF THE NEW JERSEY MARGIN (WESTERN NORTH ATLANTIC), DEEP SEA DRILLING PROJECT LEG 93, SITE 604: SEDIMENTARY AND PALEO-OCEANOGRAPHIC IMPLICATIONS OF THE BIOSTRATIGRAPHY	493	14. BIOMETRIC ANALYSIS OF <i>PLANOROTALITES PSEUDOMENARDII</i> (UPPER PALEOCENE) AT DEEP SEA DRILLING PROJECT SITE 605, NORTHWESTERN ATLANTIC	577
M. Moullade		A. J. Nederbragt and J. E. van Hinte	
9. MIOCENE DISSOLUTION FACIES AND MICROFACIES AT NORTHWEST ATLANTIC DEEP SEA DRILLING PROJECT SITE 603	511	B. CALCAREOUS NANNOFOSSILS	
E. Gervais		15. NEOGENE CALCAREOUS NANNOFOSSILS FROM DEEP SEA DRILLING PROJECT SITE 603, LOWER CONTINENTAL RISE, WESTERN NORTH ATLANTIC: BIOSTRATIGRAPHY AND CORRELATIONS WITH MAGNETIC AND SEISMIC STRATIGRAPHY	593
10. EOCENE BENTHIC FORAMINIFERS FROM THE UPPER CONTINENTAL RISE OFF NEW JERSEY, DEEP SEA DRILLING PROJECT SITE 605.....	525	J. P. Muza, S. W. Wise, Jr., and J. M. Covington	
R. Hulsbos		16. CALCAREOUS NANNOFOSSIL BIOSTRATIGRAPHY OF A LOWER CRETACEOUS DEEP-SEA FAN COMPLEX, DEEP SEA DRILLING PROJECT LEG 93 SITE 603, LOWER CONTINENTAL RISE OFF CAPE HATTERAS	617
11. BIOSTRATIGRAPHIC AND PALEOENVIRONMENTAL STUDY OF PALEOCENE BENTHIC AND PLANKTONIC FORAMINIFERS, SITE 605, DEEP SEA DRILLING PROJECT LEG 93.....	539	J. M. Covington and S. W. Wise, Jr.	
P. Saint-Marc		17. NEOGENE AND PALEOCENE-MAESTRICHTIAN CALCAREOUS NANNOFOSSIL STRATIGRAPHY, DEEP SEA DRILLING PROJECT SITES 604 AND 605, UPPER CONTINENTAL RISE OFF NEW JERSEY: SEDIMENTATION RATES, HIATUSES, AND CORRELATIONS WITH SEISMIC STRATIGRAPHY.....	661
		T. H. Lang and S.W. Wise, Jr.	

Chapter	Page	Chapter	Page
18. EOCENE CALCAREOUS NANNOFOS- SILS, DEEP SEA DRILLING PROJECT SITE 605, UPPER CONTINENTAL RISE OFF NEW JERSEY, U.S.A.	685	27. SILICOFLAGELLATES AND EBRIDIANS FROM THE NEW JERSEY TRANSECT, DEEP SEA DRILLING PROJECT LEG 93, SITES 604 AND 605.....	801
J. L. Applegate and S. W. Wise, Jr.		K. McCartney and S. W. Wise, Jr.	
19. PALEOCENE-EOCENE CALCAREOUS NANNOFOSSILS OF ONSHORE WELLS FROM THE COASTAL PLAIN OF NEW JERSEY AND MARYLAND, U.S.A.....	699	28. SILICEOUS SPONGE SPICULES FROM DEEP SEA DRILLING PROJECT LEG 93 ...	815
Y.-W. Jiang and S. W. Wise, Jr.		K. McCartney	
C. RADIOLARIANS		29. ICHNOFABRICS IN EOCENE TO MAES- TRICHTIAN SEDIMENTS FROM DEEP SEA DRILLING PROJECT SITE 605, OFF THE NEW JERSEY COAST	825
20. CENOZOIC RADIOLARIA IN THE WESTERN NORTH ATLANTIC, SITE 603, LEG 93 OF THE DEEP SEA DRILLING PROJECT.....	713	A. Wetzel	
A. Nishimura		PART V: SEDIMENTOLOGY	
D. OTHER MICROFOSSIL GROUPS		A. PALEOMAGNETICS	
21. ICHTHYOLITH EVIDENCE FOR THE AGE OF REFLECTOR A ^u , DEEP SEA DRILLING PROJECT SITE 603.....	739	30. LATE CENOZOIC MAGNETOSTRATIG- RAPHY OF DEEP SEA DRILLING PROJ- ECT HOLE 603C, LEG 93, ON THE NORTH AMERICAN CONTINENTAL RISE OFF CAPE HATTERAS.....	839
M. B. Hart and G. S. Mountain		G. Canninga, J. D. A. Zijderveld, and J. E. van Hinte	
22. PALYNOLOGY OF SITES 603 AND 605, LEG 93, DEEP SEA DRILLING PROJECT...	751	31. EARLY CRETACEOUS MAGNETIC PO- LARITY TIME SCALE AND THE MAG- NETOSTRATIGRAPHY OF DEEP SEA DRILLING PROJECT SITES 603 AND 534, WESTERN CENTRAL ATLANTIC	849
D. Habib and W. S. Drugg		J. G. Ogg	
23. REMAINS OF EARLY CRETACEOUS AM- MONITES AND OF A FISH FROM DEEP SEA DRILLING PROJECT SITE 603	777	32. UPPER CRETACEOUS TO PALEOCENE MAGNETOSTRATIGRAPHY OF DEEP SEA DRILLING PROJECT SITE 605, NORTHWEST ATLANTIC.....	881
P. J. Hoedemaeker		J. Bruins, J. E. van Hinte, and J. D. A. Zijderveld	
24. NEOGENE PALYNOLOGY OF DEEP SEA DRILLING PROJECT SITE 603 ON THE LOWER CONTINENTAL RISE, NORTH- WESTERN ATLANTIC.....	783	B. LITHOSTRATIGRAPHY	
W. A. van der Kaars		33. EARLY CRETACEOUS TURBIDITE SEDI- MENTATION AT DEEP SEA DRILLING PROJECT SITE 603, OFF CAPE HAT- TERAS (LEG 93)	891
25. DIATOM OCCURRENCES, DEEP SEA DRILLING PROJECT SITE 604.....	789	M. Sarti and U. von Rad	
W. H. Abbott			
26. MIDDLE EOCENE DIATOMS FROM THE NORTH ATLANTIC, DEEP SEA DRILL- ING PROJECT SITE 605	793		
A. M. Gombos, Jr.			

Chapter	Page	Chapter	Page
34. PROVENANCE AND DEPOSITION OF LOWER CRETACEOUS TURBIDITE SANDS AT DEEP SEA DRILLING PROJECT SITE 603, LOWER CONTINENTAL RISE OFF NORTH CAROLINA.....	941	41. CENOZOIC CLAY MINERALOGY OF SITES 604 AND 605, NEW JERSEY TRANSECT, DEEP SEA DRILLING PROJECT LEG 93	1023
M. A. Holmes, J. R. Breza, and S. W. Wise, Jr.		D. A. Dunn, D. M. Patrick, and U. Cooley, Jr.	
35. PETROLOGY AND GEOCHEMISTRY OF SANDSTONES IN THE LOWER CRETACEOUS SUBMARINE FAN COMPLEX, DEEP SEA DRILLING PROJECT HOLE 603B	961	42. GREEN SPHERULES AS INDICATORS OF THE CRETACEOUS/TERTIARY BOUNDARY IN DEEP SEA DRILLING PROJECT HOLE 603B	1039
D. R. Prezbindowski and E. D. Pittman		G. T. Klaver, T. M. G. van Kempen, F. R. Bianchi, and S. J. van der Gaast	
36. COMPOSITION, K-Ar DATES AND ORIGIN OF A MID-EOCENE RHYOLITIC ASH LAYER AT DEEP SEA DRILLING PROJECT SITES 605 AND 613, NEW JERSEY TRANSECT, LEGS 93 AND 95	977	43. GEOCHEMICAL SEARCH FOR THE CRETACEOUS/TERTIARY BOUNDARY IN HOLE 605, LEG 93	1057
U. von Rad and H. Kreuzer		G. T. Klaver	
PART VI: INORGANIC GEOCHEMISTRY		44. AUTHIGENIC Fe-Mn CARBONATES IN CRETACEOUS AND TERTIARY SEDIMENTS OF THE CONTINENTAL RISE OFF EASTERN NORTH AMERICA, DEEP SEA DRILLING PROJECT SITE 603	1061
37. CRETACEOUS CLAY MINERALOGY OF THE CONTINENTAL RISE OFF THE EAST COAST OF THE UNITED STATES, SITE 603, DEEP SEA DRILLING PROJECT LEG 93	985	U. von Rad and R. Botz	
W. D. Huff		45. CLAY MINERALOGY OF THE LOWER CRETACEOUS DEEP-SEA FAN, DEEP SEA DRILLING PROJECT SITE 603, LOWER CONTINENTAL RISE OFF NORTH CAROLINA	1079
38. GEOCHEMISTRY, CARBON AND OXYGEN STABLE ISOTOPE COMPOSITION, AND DIAGENETIC TEXTURAL FEATURES OF LOWER CRETACEOUS PELAGIC CYCLIC SEDIMENTS FROM THE WESTERN NORTH ATLANTIC, DEEP SEA DRILLING PROJECT HOLE 603B	989	M. A. Holmes	
M. Baltuck		PART VII: ORGANIC GEOCHEMISTRY	
39. LATE CENOZOIC STABLE ISOTOPIC STRATIGRAPHY, DEEP SEA DRILLING PROJECT SITES 603 AND 604, NORTH-EAST AMERICAN CONTINENTAL RISE ...	997	46. INORGANIC AND ORGANIC GEOCHEMISTRY OF EOCENE TO CRETACEOUS STRATA RECOVERED FROM THE LOWER CONTINENTAL RISE, NORTH AMERICAN BASIN, SITE 603, DEEP SEA DRILLING PROJECT LEG 93	1093
G. Ganssen		W. E. Dean and M. A. Arthur	
40. PETROLOGY, AND CARBON AND OXYGEN STABLE ISOTOPIC COMPOSITION OF MACROFOSSILS AND SEDIMENTS FROM THE BLAKE-BAHAMA FORMATION, DEEP SEA DRILLING PROJECT SITE 603, WESTERN NORTH ATLANTIC LOWER CONTINENTAL RISE.....	1003	47. CRETACEOUS FORMATIONS FROM THE LOWER CONTINENTAL RISE OFF CAPE HATTERAS: ORGANIC GEOCHEMISTRY, DINOFLAGELLATE CYSTS, AND THE CENOMANIAN/TURONIAN BOUNDARY EVENT AT SITES 603 (LEG 93) AND 105 (LEG 11).....	1139
J. A. Haggerty		J. P. Herbin, E. Masure, and J. Roucaché	

Chapter	Page
48. GEOCHEMISTRY AND PETROGRAPHY OF ORGANIC MATTER FROM DEEP SEA DRILLING PROJECT SITE 603, LOWER CONTINENTAL RISE OFF CAPE HATTERAS	1163
J. Rullkötter, P. K. Mukhopadhyay, and D. H. Welte	
49. ORGANIC GEOCHEMICAL CHARACTER AND HYDROCARBON SOURCE POTENTIAL OF SELECTED BLACK SHALES, DEEP SEA DRILLING PROJECT HOLE 603B	1177
B. J. Katz	
50. ORGANIC-CARBON CONTENT OF SEDIMENTS AND ROCKS FROM DEEP SEA DRILLING PROJECT SITES 603, 604, AND 605, WESTERN MARGIN OF THE NORTH ATLANTIC	1187
P. A. Meyers	
51. ORGANIC GEOCHEMICAL COMPARISON OF CRETACEOUS BLACK SHALES AND ADJACENT STRATA FROM DEEP SEA DRILLING PROJECT SITE 603, OUTER HATTERAS RISE	1195
K. W. Dunham, P. A. Meyers, and P. L. Dunham	
52. LIPID GEOCHEMISTRY OF CRETACEOUS/TERTIARY BOUNDARY SEDIMENTS, HOLE 605, DEEP SEA DRILLING PROJECT LEG 93 AND STEVNS KLINT, DENMARK	1211
B. R. T. Simoneit and H. R. Beller	
53. A GEOCHEMICAL STUDY OF ORGANIC-MATTER-RICH UPPER CRETACEOUS CLAYSTONES FROM THE LOWER CONTINENTAL RISE OFF NORTH AMERICA, DEEP SEA DRILLING PROJECT HOLE 603B	1223
R. M. Joyce and E. S. Van Vleet	
54. C1-C3 HYDROCARBONS IN SEDIMENTS FROM THE LOWER CONTINENTAL RISE, DEEP SEA DRILLING PROJECT SITE 603	1231
J. K. Whelan and C. Burton	

Chapter	Page
55. LOW-MOLECULAR-WEIGHT HYDROCARBONS IN SEDIMENTS OF DEEP SEA DRILLING PROJECT LEG 93, HOLE 603B, OFF THE EAST COAST OF NORTH AMERICA	1237
R. G. Schaefer and D. Leythaeuser	
56. ORGANIC CARBON AND NITROGEN, SEDIMENT COMPOSITION, AND CLAY MINERALOGY OF DEEP SEA DRILLING PROJECT SITE 603, WESTERN ATLANTIC OCEAN	1245
K.-C. Emeis, B. Mycke, H.-H. Richnow, A. Spitzzy, and E. T. Degens	
57. SULFUR ISOTOPIC VARIATIONS IN NODULAR AND DISSEMINATED PYRITE: HOLE 603B	1257
L. M. Bonnell and T. F. Anderson	
58. A GEOCHEMICAL NOTE: COMPARISON OF TECHNIQUES FOR OBTAINING CaCO ₃ , ORGANIC CARBON AND TOTAL NITROGEN IN LIMESTONES AND SHALES	1263
M. A. Arthur, S. Hagerty, W. E. Dean, G. E. Claypool, T. A. Daws, D. McManaman, P. A. Meyers, and K. Dunham	

PART VIII: SYNTHESSES

59. DEEP SEA DRILLING PROJECT LEG 93: BIOSTRATIGRAPHIC SYNTHESIS	1271
M. Moullade	
60. LATE APTIAN TO RECENT SEDIMENTOLOGICAL HISTORY OF THE LOWER CONTINENTAL RISE OFF NEW JERSEY, DEEP SEA DRILLING PROJECT SITE 603 ..	1285
J. Haggerty, M. Sarti, U. von Rad, J. G. Ogg, and D. A. Dunn	
61. LOWER CRETACEOUS PELAGIC SEDIMENTS OF DEEP SEA DRILLING PROJECT SITE 603, WESTERN NORTH ATLANTIC: A SYNTHESIS	1305
J. G. Ogg, J. Haggerty, M. Sarti, and U. von Rad	

Chapter	Page
62. SYNTHESIS OF ORGANIC GEOCHEMICAL STUDIES, DEEP SEA DRILLING PROJECT LEG 93, NORTH AMERICAN CONTINENTAL MARGIN.....	1333
P. A. Meyers	
63. UPPER MAESTRICHTIAN TO MIDDLE EOCENE STRATIGRAPHY OF THE NEW JERSEY SLOPE AND COASTAL PLAIN.....	1343
R. K. Olsson and S. W. Wise, Jr.	
64. MESOZOIC-CENOZOIC DEPOSITIONAL ENVIRONMENTS REVEALED BY DEEP SEA DRILLING PROJECT LEG 93 DRILLING ON THE CONTINENTAL RISE OFF THE EASTERN UNITED STATES: CRUISE SUMMARY	1367
S. W. Wise, Jr. and J. E. van Hinte	

Chapter	Page
BACK POCKET FOLDOUTS, PART 2	
CHAPTER 22: FIGURE 2. STRATIGRAPHIC RANGE CHART, SHOWING DINOFLAGELLATE ZONATION AND AGE ASSIGNMENTS AT HOLE 603B.	
CHAPTER 31: FIGURE 7. EARLY CRETACEOUS AND TITHONIAN MAGNETOSTRATIGRAPHY OF HOLE 534A.	
CHAPTER 31: FIGURE 8. EARLY CRETACEOUS MAGNETOSTRATIGRAPHY OF HOLE 603B.	
CHAPTER 31: FIGURE 9. EARLY CRETACEOUS POLARITY COLUMNS FOR SITES 534 AND 603 PLOTTED ON A PELAGIC-SEDIMENT STRATIGRAPHIC SCALE.	

ACKNOWLEDGMENTS

This two-volume set of core descriptions and scientific manuscripts is a testament to the enthusiasm, dedication, patience, and fortitude of the scientists and crew who took part on Leg 93. We have also been greatly aided by shore-based colleagues who have enhanced our efforts to analyze the record amount of core material recovered and to put forward the scientific findings.

We are grateful to the Deep Sea Drilling Project for the opportunity to participate on Leg 93, to Captain Sidney Shuman, the crew, and the technical staff of the *Glomar Challenger* for their untiring efforts on our behalf. In particular, we appreciate the efforts of Cruise Operations Manager Glen Foss and Drilling Superintendent A. C. Wheeler, Jr., whose professional approach and good humor saw us through all phases of the drilling operations in good times and bad, including the loss of the drill string at Site 603, a mishap which necessitated a total modification of the cruise plan. In addition, Lab Officer Mike Lehman and his dedicated technical staff rendered their usual superb assistance in obtaining the scientific results. Particular thanks go to our shipboard photographer, Kevin Reid, whose efforts in photographing and enlarging seismic profiles from journal reprints aided immeasurably in our efforts to locate the eventual sites drilled on the New Jersey Transect (Sites 604 and 605).

Prior to departure from Norfolk, Virginia, Randall Spencer and Carl Koch (Old Dominion University) made available library facilities and personnel to provide documents and publications which we lacked because illness had made necessary a last-minute change in the shipboard scientific party.

Onshore, the DSDP Production and Editorial Staff did its utmost to make our tasks of co-ordinating and summarizing this volume as painless as possible. Special credit is due Jan Blakeslee, DSDP Production Manager, who assumed the editorship of this volume as staff was being reduced in anticipation of termination of the International Phase of Ocean Drilling. We also would like to acknowledge the efforts of our Staff Science Representative, Dean A. Dunn (now at the University of Southern Mississippi), for supervising the critical review of manuscripts submitted for this volume.

Discussions with our many shipboard and shorelab colleagues have been most stimulating and helpful. We particularly wish to acknowledge the expertise, helpful advice, and continuing discussions rendered generously by those who did not participate on Leg 93. These include B. Charlotte Schreiber, Daniel Habib, Gregg S. Mountain, John Farre, and Kenneth G. Miller (all affiliated with Lamont-Doherty Geological Observatory), Brian Tucholke and William A. Berggren (Woods Hole Oceanographic Institution), John Schlee (USGS, WHOI), Richard K. Olsson (Rutgers University, New Brunswick), John H. Puffer (Rutgers University, Newark), Felix M. Gradstein and Lubomir F. Jansa (Bedford Institute of Oceanography, Dartmouth, Canada), and Roger Amato, Gary M. Edson, and their colleagues at the Minerals Management Service, Vienna, Virginia. Equally important have been similar contributions of time, talent, and helpful discussion from colleagues in industry, particularly Peter R. Vail, Bilal U. Haq (both of Exxon Production Research Co., Houston), E. R. Ringer, H. L. Patten, and E. Picou (Shell Offshore Inc., New Orleans), and Dennis R. Prezbindowski and Edward D. Pittman (Amoco Research Center, Tulsa).

In addition to the above, we are pleased to acknowledge the efforts of Brian Tucholke, John Ewing, Hans Schouten, and C. Wylie Poag and the DSDP Atlantic Passive Margin Panel in planning and selecting the sites drilled during Leg 93. Because loss of the drill string robbed us of our final basement objective at Site 603, DSDP Leg 95 workers were asked to attempt three subsequent single-bit holes to reach that objective. We thank them for their efforts and time expended on our behalf.

Finally, we are pleased to acknowledge the following reviewers of manuscripts submitted to Volume 93, for their conscientious reviews and valuable comments:

Paul Aharon, Thomas F. Anderson, James Aronson, Michael Arthur, William L. Balsam, Eric Barron, John A. Barron, William A. Berggren, Arnold Bouma, James Brooks, David Bukry, Lloyd H. Burckle, Laurel Bybell, James C. Channell, Paul F. Ciesielski, Murlene W. Clark, George Claypool, Brad Clement, Bruce Corless, William Cornell, Robert Cunningham, Jr., Walter E. Dean, Patricia Doyle, Warren S. Drugg, A. A. Ekdale, Brooks B. Ellwood, William R. Evitt, John Farrington, Ray E. Ferrell, Jr., Mark Filewicz, Robert M. Finks, Stephen Fisher, Stefan Gartner, Jr., John C. Hathaway, Merton E. Hill III, David A. Hodell, Randall Hughes, James C. Ingle, Jr., George Jeletzky, Michael A. Kaminski, James P. Kennett, Kim Klitgord, Keith Kvenvolden, Frank Kyte, Edward P. Laine, Steven Larter, R. Mark Leckie, Michael T. Ledbetter, Margaret S. Leinen, Hsin-Yi Ling, Kristin MacDougall, Larry A. Mayer, Judith McKenzie, Philip A. Meyers, Maurice A. Meylan, Kenneth G. Miller, Gregory S. Mountain, Jay P. Muza, Catherine A. Nigrini, Richard K. Olsson, Carl Orth, Robert H. Osborne, Amanda Palmer, David M. Patrick, Emile A. Pessagno, Jr., Ken Peters, Raymond Pfeifer, Frederick Prahl, Warren L. Prell, Dennis Prezbindowski, Adolfo Requejo, Alastair Robertson, H. E. Robertson, Cole Robison, Peter H. Roth, Gail S. Russell, William Sager, Robert Sheridan, Thomas Shipley, Armand Silva, Bernd Simoneit, William V. Sliter, Jan Smit, Scott W. Snyder, John C. Steinmetz, Ronald Surdam, Peter Swart, Ronald W. Tank, Martha Tarafa, Lisa Tauxe, Fritz Theyer, Keith Thompson, Robert Thunell, Elise van Campo, Edward Van Vleet, Peter Ward, Jean Whelan, Denis Wiesenburg, Roy H. Wilkens, Douglas Williams, Graham Williams, Thomas R. Worsley, Ramil C. Wright, John Zumberge.